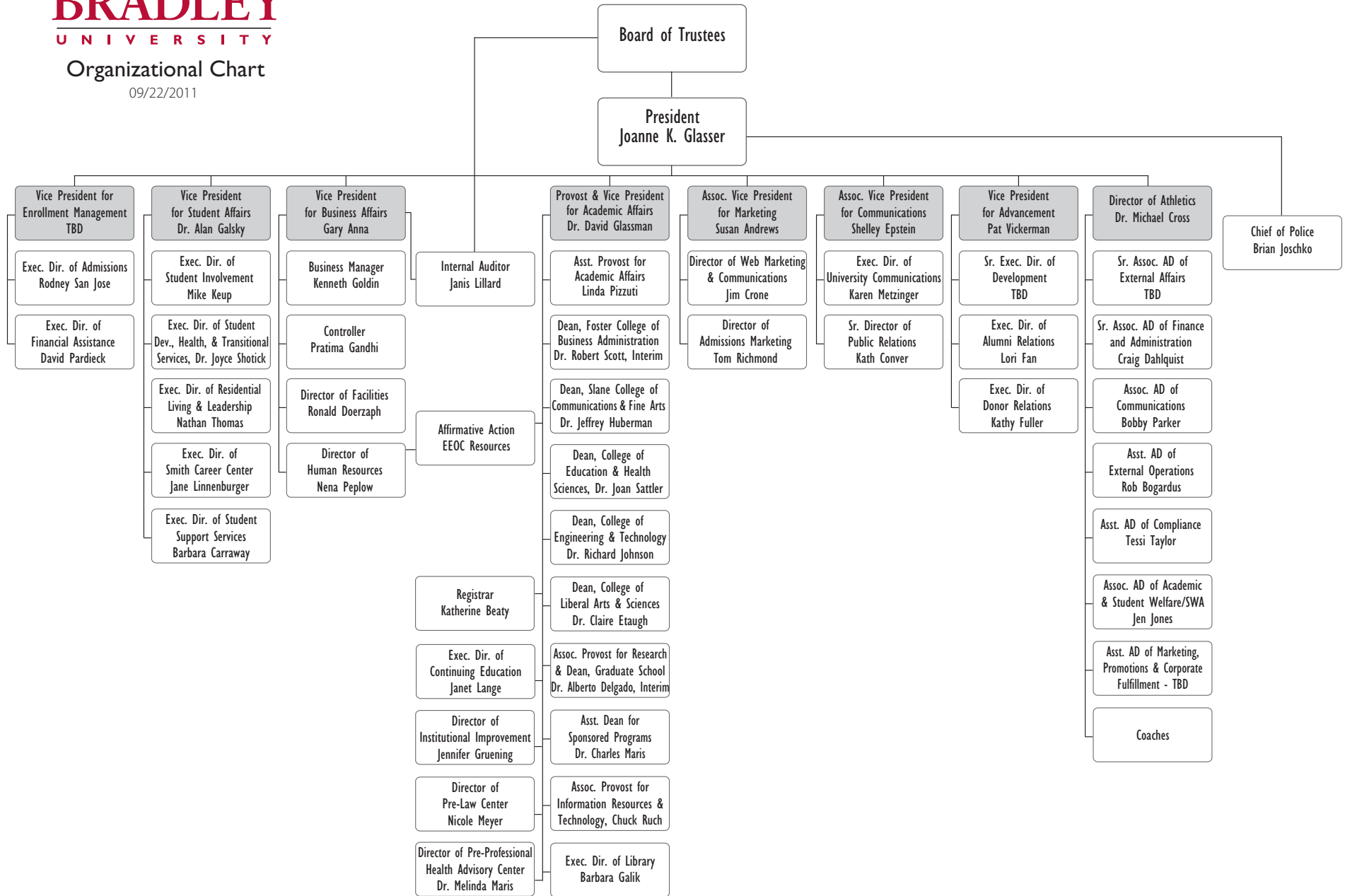


BRADLEY UNIVERSITY

Organizational Chart

09/22/2011



ENTERING STUDENTS NEW TO BRADLEY Full-Time Students		
Fall Term	First-Time Students	Transfers
2001	1110	352
2002	1112	320
2003	1105	366
2004	1014	378
2005	1136	354
2006	1075	354
2007	1080	311
2008	1032	287
2009	1106	303
2010	1136	299
2011	1018	296

FALL SEMESTER ENROLLMENT Undergraduate and Graduate		
Fall Term	Undergrad Students	Graduate Students
2001	5167	829
2002	5190	908
2003	5305	832
2004	5315	754
2005	5369	785
2006	5315	812
2007	5217	838
2008	5075	798
2009	5061	740
2010	5067	746
2011	4955	685

FALL SEMESTER ENROLLMENT Full-Time or Part-Time Status			
Fall Term	Full-Time Students	Part-Time Students	F.T.E
2001	4923	1073	5281
2002	5038	1060	5391
2003	5151	986	5480
2004	5211	858	5497
2005	5263	891	5560
2006	5242	885	5537
2007	5235	820	5508
2008	5040	833	5318
2009	5105	696	5337
2010	5092	721	5332
2011	4970	670	5193

SUMMER SCHOOL & INTERIM ENROLLMENT				
Year	January	May I & II	Summer I & II	Total
2001	891	705	1571	3167
2002	699	664	1418	2781
2003	744	680	1427	2851
2004	739	720	1331	2790
2005	743	739	1455	2937
2006	779	706	1494	2979
2007	884	739	1622	3245
2008	875	683	1605	3163
2009	860	646	1460	2966
2010	793	615	1404	2812
2011	781	680	1363	2824

COMPARATIVE ALL-UNIVERSITY ENROLLMENTS FOR FALL SEMESTERS

Example of Stay Rate: 2004 Sophomores/2003 Freshmen = Stay Rate

% Percent of change is change from previous year.

FALL OF		DAY ENROLLMENT								Total Under-Graduate	All Graduate Students	Evening Undergrad Students	All Full-Time Students Day & Eve	Total Head-Count	All Part-Time	F.T.E using Pt/3	New Day Entrants (First time)	New Day Transfer Students	Tuition
		Freshmen	Soph Stay Rate	Sophomores	Junior Stay Rate	Juniors	Senoir Stay Rate	Seniors	Unclassified										
2002	Total	1176	94.5	1124	112.7	1354	89.7	1223	11	4888	908	324	5038	6098	1060	5391	1110	292	\$16000/Yr.
	Returning	64		1024		1153		1212		% change									1-7 \$435/SH
	Transfer	18		84		201		11		-5.40	9.53	8.00	2.34	1.70	-1.21	2.10	0.27	-7.89	7.5-11.5 \$540/SH
	New Students	1094		16		0		0											
2003	Total	1169	103.5	1217	124.0	1394	92.8	1257	7	5044	832	261	5151	6137	986	5480	1098	348	\$16800/Yr.
	Returning	48		1099		1198		1246		% change									1-7 \$460/SH
	Transfer	27		114		196		11		3.19	-8.37	-19.44	2.24	0.64	-6.98	1.64	-1.08	19.18	7.5-11.5 \$565/SH
	New Students	1094		4		0		0											
2004	Total	1082	102.7	1200	117.7	1433	97.6	1360	11	5086	754	229	5211	6069	858	5497	1013	362	\$17600/Yr.
	Returning	65		1061		1234		1340		% change									1-7 \$480/SH
	Transfer	17		126		199		20		0.83	-9.38	-12.26	1.16	-1.11	-12.98	0.32	-7.74	4.02	7.5-11.5 \$590/SH
	New Students	1000		13		0		0											
2005	Total	1208	103.0	1115	112.6	1351	99.5	1426	14	5114	785	255	5263	6154	891	5560	1130	338	\$18700/Yr. Frosh
	Returning	55		991		1172		1414		% change									\$18500-Cont&Tran
	Transfer	36		111		179		12		0.55	4.11	11.35	1.00	1.40	3.85	1.15	11.55	-6.63	1-7 \$510/SH
	New Students	1117		13		0		0											7.5-11.5 \$620/SH
2006	Total	1118	98.0	1193	116.0	1297	105.0	1427	12	5047	812	268	5242	6127	885	5537	1067	334	SEE NOTE BELOW
	Returning	63		1058		1102		1411		% change									
	Transfer	9		115		194		16		-1.31	3.44	5.10	-0.40	-0.44	-0.67	-0.41	-5.58	-1.18	
	New Students	1046		20		1		0											
2007	Total	1114	104.0	1166	110.0	1313	106.0	1380	7	4980	838	237	5235	6055	820	5508	1076	286	\$21,000 Fr, Soph, Jr
	Returning	46		1044		1157		1364		% change									\$21,000 Sr.
	Transfer	20		95		155		16		-1.33	3.20	-11.57	-0.13	-1.18	-7.34	-0.52	0.84	-14.37	1-7 hrs \$580 per hr
	New Students	1048		27		1		0											8-11 \$700 UG \$580 GR
2008	Total	1061	102.0	1147	108.0	1267	103.0	1361	6	4842	798	233	5040	5873	833	5317	1024	273	
	Returning	39		1039		1110		1351		% change									
	Transfer	17		89		157		10		-2.77	-4.77	-1.69	-3.72	-3.01	1.59	-3.46	-4.83	-4.55	
	New Students	1005		19		0		0											
2009	Total	1134	100.0	1069	112.0	1289	109.0	1383	6	4881	740	180	5105	5801	696	5337	1106	283	\$23,950 Fr, Soph, Jr
	Returning	35		970		1112		1369		% change									\$23,950 Sr.
	Transfer	15		77		177		14		0.81	-7.27	-22.75	1.29	-1.23	-16.45	0.36	8.01	3.66	1-7 hrs \$650/SH
	New Students	1084		22		0		0											7.5-11.5 \$780/SH
2010	Total	1175	98.0	1115	116.0	1242	103.0	1330	4	4866	746	201	5092	5813	721	5332	1135	292	
	Returning	59		1002		1065		1309		% change									
	Transfer	10		85		176		21		-0.31	0.81	11.67	-0.25	0.21	3.59	-0.09	2.62	3.18	
	New Students	1106		28		1		0											
2011	Total	1038	98.0	1163	112.0	1257	105.0	1309	6	4773	685	182	4970	5640	670	5193	1018	289	
	Returning	42		1057		1071		1290		% change									
	Transfer	13		73		184		19		-1.91	-8.18	-9.45	-2.40	-2.98	-7.07	-2.61	-10.31	-1.03	
	New Students	983		33		2		0											

2006: \$19,900 Frosh/Soph, \$19,700 All other UG, 1-7 hours \$550./SH, 7.5+ hours \$660./SH, GRAD 1-7 hours \$550./SH, 7.5+ hours \$565./SH

FIVE YEAR COMPARISON OF STUDENT LOAD BY CLASS

FALL SEMESTERS

	2007				2008				2009				2010				2011			
	12+ SH	<12 SH	% <12	Total	12+ SH	<12 SH	% <12	Total	12+ SH	<12 SH	% <12	Total	12+ SH	<12 SH	% <12	Total	12+ SH	<12 SH	% <12	Total
Class 1	1116	3	0.3	1119	1064	6	0.6	1070	1133	2	0.2	1135	1172	4	0.3	1176	1031	10	1.0	1041
Class 2	1173	14	1.2	1187	1135	29	2.5	1164	1072	16	1.5	1088	1125	14	1.2	1139	1165	21	1.8	1186
Class 3	1286	86	6.3	1372	1253	74	5.6	1327	1265	70	5.2	1335	1216	76	5.9	1292	1227	63	4.9	1290
Class 4	1344	187	12.2	1531	1330	175	11.6	1505	1331	165	11.0	1496	1294	160	11.0	1454	1257	174	12.2	1431
Class 5	37	730	95.2	767	43	687	94.1	730	46	629	93.2	675	53	641	92.4	694	47	602	92.8	649
Class 6	0	71	100.0	71	3	65	95.6	68	2	63	96.9	65	4	48	92.3	52	1	35	97.2	36
Unclass.	0	8	100.0	8	0	9	100.0	9	0	7	100.0	7	0	6	100.0	6	0	7	100.0	7
ALL 12+ SH	4956				4828				4849				4864				4728			
< 12 SH	1099				1045				952				949				912			
Headcount	6055				5873				5801				5813				5640			

F.T.E. MAJORS BY ACADEMIC UNIT Undergraduate Students							
Fall Term	Bus. Adm.	Com & Fine Arts	Edu & H. S.	Engr & Tech	LAS	Cont Educ	AEP
2001	980	971	755	762	1459	4	382
2002	1005	1011	798	725	1522	5	331
2003	1025	1007	823	747	1542	3	345
2004	1000	945	901	743	1501	4	378
2005	980	922	1032	768	1419	6	337
2006	998	829	1054	754	1186	6	286
2007	944	803	1008	772	1179	3	311
2008	879	774	986	743	1186	3	308
2009	812	813	1024	776	1148	2	
2010	747	802	1037	823	1126	2	357
2011	697	806	1009	815	1117	2	324

COURSE ENROLLMENTS BY ACADEMIC UNIT (Fall and Spring Semesters)					
Year	Bus. Adm.	Com & Fine Arts	Edu & H.S.	Engr & Tech	LAS
2001-2	10,504	8,692	6,618	5,451	22,837
2002-3	10,954	8,758	7,011	5,550	23,072
FA 2003	5,696	4,467	4,187	2,896	12,129
SP 2004	5,335	4,254	3,225	2,809	11,321
FA 2004	5,665	4,404	4,525	2,894	11,842
SP 2005	5,454	4,109	3,732	2,763	11,076
FA 2005	5,502	4,529	5,022	3,039	12,556
SP 2006	5,479	4,149	4,260	2,907	11,182
FA 2006	5,653	4,340	5,266	2,890	12,347
SP 2007	5,287	4,121	4,416	2,862	11,259
FA 2007	5,638	4,567	5,330	3,113	12,130
SP 2008	5,253	4,219	4,438	2,833	10,988
FA 2008	5,354	4,385	5,320	2,896	11,862
SP 2009	4,931	4,042	4,555	2,792	10,576
FA 2009	4,970	4,574	5,102	3,148	12,067
SP 2010	4,669	4,089	4,443	2,938	10,636
FA 2010	4,649	4,531	5,489	3,268	12,129

--

SP 2011	4,343	4,076	4,261	3,181	11,073
FA 2011	4,413	4,409	5,166	3,304	11,929

ENROLLMENT REPORT

Fall Semester 2011

	TOTAL	Day Students	Evening Students	Full-Time Students	Part-Time Students	Men	Women
Freshmen	1041	1038	3	1031	10	477	564
Sophomores	1186	1163	23	1165	21	561	625
Juniors	1290	1257	33	1227	63	586	704
Seniors	1431	1309	122	1257	174	678	753
Unclassified	7	6	1	0	7	0	7
UNDERGRADUATE	4955	4773	182	4680	275	2302	2653
Graduate Students Degree Programs	649	402	247	288	361	308	341
At-Large	36	25	11	2	34	23	13
GRADUATE	685	427	258	290	395	331	354
UNIVERSITY	5640	5200	440	4970	670	2633	3007
First-Time Entrants	1018	1018	0	1016	2	471	547
New Transfers	296	289	7	273	23	141	155
TOTAL	1314	1307	7	1289	25	612	702

Fall Semester 2010

	TOTAL	Day Students	Evening Students	Full-Time Students	Part-Time Students	Men	Women
Freshmen	1176	1175	1	1172	4	539	637
Sophomores	1139	1115	24	1125	14	509	630
Juniors	1292	1242	50	1216	76	605	687
Seniors	1454	1330	124	1294	160	695	759
Unclassified	6	4	2	0	6	4	2
UNDERGRADUATE	5067	4866	201	4807	260	2352	2715
Graduate Students Degree Programs	694	407	287	279	415	331	363
At-Large	52	24	28	6	46	23	29
GRADUATE	746	431	315	285	461	354	392
UNIVERSITY	5813	5297	516	5092	721	2706	3107
First-Time Entrants	1136	1135	1	1136	0	512	624
New Transfers	299	292	7	276	23	154	145
TOTAL	1435	1427	8	1412	23	666	769

REPORT ON EARLY REGISTRATION

	Apr- 2006 for Fall 2006	Nov- 2006 for Spring 2007	Apr- 2007 for Fall 2007	Nov- 2007 for Spring 2008	Apr- 2008 for Fall 2008	Nov- 2008 for Spring 2009	Apr- 2009 for Fall 2009	Nov- 2009 for Spring 2010	Apr- 2010 for Fall 2010	Nov- 2010 for Spring 2011	Apr- 2011 for Fall 2011
Students Participated in Early Registration	4208	5238	4240	5139	4097	4909	3948	4911	3939	4942	3965
Undergraduate Students	3925	4740	3825	4647	3742	4472	3639	4485	3615	4504	3647
Graduate Students	283	498	415	492	355	437	309	426	324	438	318
FINAL REGISTRATION											
Headcount	6127	5844	6055	5667	5873	5520	5801	5505	5813	5497	5640
Full-Time	5242	4903	5235	4861	5040	4722	5105	4744	5092	4751	4970

ENROLLMENT REPORT

A-9

Fall Semester 2010

	TOTAL	Day Students	Evening Students	Full-Time Students	Part-Time Students	Men	Women
Freshmen	1176	1175	1	1172	4	539	637
Sophomores	1139	1115	24	1125	14	509	630
Juniors	1292	1242	50	1216	76	605	687
Seniors	1454	1330	124	1294	160	695	759
Unclassified	6	4	2	0	6	4	2
UNDERGRADUATE	5067	4866	201	4807	260	2352	2715
Graduate Students Degree Programs	694	407	287	279	415	331	363
At-Large	52	24	28	6	46	23	29
GRADUATE	746	431	315	285	461	354	392
UNIVERSITY	5813	5297	516	5092	721	2706	3107
First-Time Entrants	1136	1135	1	1136	0	512	624
New Transfers	299	292	7	276	23	154	145
TOTAL	1435	1427	8	1412	23	666	769

Spring Semester 2011

	TOTAL	Day Students	Evening Students	Full-Time Students	Part-Time Students	Men	Women
Freshmen	857	847	10	851	6	383	474
Sophomores	1058	1047	11	1038	20	479	579
Juniors	1222	1198	24	1139	83	576	646
Seniors	1613	1445	168	1430	183	754	859
Unclassified	4	3	1	0	4	1	3
UNDERGRADUATE	4754	4540	214	4458	296	2193	2561
Graduate Students Degree Programs	701	444	257	290	411	343	358
At-Large	42	23	19	3	39	15	27
GRADUATE	743	467	276	293	450	358	385
UNIVERSITY	5497	5007	490	4751	746	2551	2946
First-Time Entrants	2	2	0	2	0	1	1
New Transfers	65	61	4	48	17	28	37
TOTAL	67	63	4	50	17	29	38

COMPARISON OF ENROLLMENT BETWEEN FIRST AND SECOND SEMESTERS

	FR	SO	JR	SR	UNCL	UNDER GRADS	GRADS	FULL TIME	PART TIME	F.T.E.	HEADCOUNT
2008 - 2009											
1ST SEM											
TOTAL	1070	1164	1327	1505	9	5075	798	5040	833	5317	5873
RETURNING	40	1053	1160	1494	9	3756	555	3642	669		
NEW ENTRANTS	1013	19	0	0	0	1032	243	1136	139		
NEW TRANSFERS	17	92	167	11	0	287	0	262	25		
Semester Difference %	-29.7	-14.2	-3.2	7.7	-80.0	-6.5	-5.7	-6.7	-4.4	-6.6	-6.4
2ND SEM											
TOTAL	825	1019	1286	1630	5	4765	755	4722	798	4988	5520
RETURNING	814	998	1243	1627	5	4687	627	4624	690		
NEW ENTRANTS	2	0	0	0	0	2	128	34	96		
NEW TRANSFERS	9	21	43	3	0	76	0	64	12		
2009 - 2010											
1ST SEM											
TOTAL	1135	1088	1335	1496	7	5061	740	5105	696	5337	5801
RETURNING	35	988	1142	1480	7	3652	523	3632	543		
NEW ENTRANTS	1084	22	0	0	0	1106	217	1200	123		
NEW TRANSFERS	16	78	193	16	0	303	0	273	30		
Semester Difference %	-29.4	-16.0	-5.0	10.4	-75.0	-6.4	0.8	-7.6	8.5	-6.8	-5.4
2ND SEM											
TOTAL	877	938	1271	1669	4	4759	746	4744	761	4997	5505
RETURNING	869	919	1231	1666	4	4689	643	4664	668		
NEW ENTRANTS	1	0	0	0	0	1	103	27	77		
NEW TRANSFERS	7	19	40	3	0	69	0	53	16		
2010 - 2011											
1ST SEM											
TOTAL	1176	1139	1292	1454	6	5067	746	5092	721	5332	5813
RETURNING	59	1025	1111	1431	6	3632	522	3589	565		
NEW ENTRANTS	1107	28	1	0	0	1136	224	1227	133		
NEW TRANSFERS	10	86	180	23	0	299	0	276	23		
Semester Difference %	-37.2	-7.7	-5.7	9.9	-50.0	-6.6	-0.4	-7.2	3.4	-6.7	-5.8
2ND SEM											
TOTAL	857	1058	1222	1613	4	4754	743	4751	746	4999	5497
RETURNING	846	1040	1194	1603	4	4687	640	4665	662		
NEW ENTRANTS	2	0	0	0	0	2	103	38	67		
NEW TRANSFERS	9	18	28	10	0	65	0	48	17		

REGISTRATION REPORT
INTERIMS AND SUMMER SESSIONS 2011

	JANUARY INTERIM		MAY I	MAY II	SUMMER STUDY ABROAD	SUMMER I	SUMMER II	TOTAL (W/O STUDY ABROAD)
		STUDY ABROAD						
Freshmen	35	0	3	0	0	15	14	67
Sophomores	70	15	38	3	7	43	44	198
Juniors	162	39	87	14	39	104	132	499
Seniors	286	74	183	41	60	191	238	939
Unclassified	5	0	4	0	0	12	12	33
UNDERGRADUATE	558	128	315	58	106	365	440	1736
Graduate Students	223	0	159	148	0	307	251	1088
UNIVERSITY	781	128	474	206	106	672	691	2824
TOTAL CREDIT HRS	2198	472	1329	711	384	2332	2144	8714

REGISTRATION REPORT
INTERIMS AND SUMMER SESSIONS 2010

	JANUARY INTERIM		MAY I	MAY II	SUMMER STUDY ABROAD	SUMMER I	SUMMER II	TOTAL (W/O STUDY ABROAD)
		STUDY ABROAD						
Freshmen	33	0	7	0	0	6	12	58
Sophomores	63	10	36	4	3	26	51	180
Juniors	189	67	91	5	33	139	137	561
Seniors	328	90	205	44	68	225	282	1084
Unclassified	4	0	12	0	0	42	18	76
UNDERGRADUATE	617	167	351	53	104	438	500	1959
Graduate Students	176	1	120	91	0	248	218	853
UNIVERSITY	793	168	471	144	104	686	718	2812
TOTAL CREDIT HRS	2216	660	1352	471	341	2530	2141	8710

SUMMER STUDY ABROAD ENROLLMENT

BY CLASS

BY COLLEGE

	2011	2010	2009	2008	2007		2011	2010	2009	2008	2007
CLASS 1	0	0	0	0	0	AEP	1	0	0	0	0
CLASS 2	7	3	2	14	4	FCB	23	27	31	34	38
CLASS 3	39	33	39	46	57	COE	0	0	0	0	0
CLASS 4	60	68	76	76	70	CFA	17	18	33	17	19
CLASS 7	0	0	0	0	0	EGT	8	11	4	6	11
UNDERGRAD	106	104	117	136	131	EHS	29	21	26	34	37
CLASS 5	0	0	0	0	0	LAS	28	27	23	45	26
CLASS 6	0	0	0	0	1	GRD	0	0	0	0	1
GRADUATE	0	0	0	0	1						
TOTAL	106	104	117	136	132	TOTAL	106	104	117	136	132

DAY STUDENTS BY CLASS Undergraduate Students					
Fall Term	Freshmen	Sophomores	Juniors	Seniors	Unclassified
2001	1184	1175	1271	1227	10
2002	1176	1124	1332	1223	11
2003	1169	1217	1394	1257	7
2004	1082	1200	1433	1360	11
2005	1208	1115	1351	1426	14
2006	1118	1193	1297	1427	12
2007	1114	1166	1313	1380	7
2008	1061	1147	1267	1361	6
2009	1134	1069	1289	1383	6
2010	1175	1115	1242	1330	4
2011	1038	1163	1257	1309	6

HEADCOUNT ENROLLMENT BY TERM OF ATTENDANCE (Fall and Spring Semesters)						
Year	Fall	January	Spring	May Int	Summer I	Summer II
2001-02	5996	699	5739	664	645	773
2002-03	6098	744	5768	680	650	777
2003-04	6137	739	5766	720	596	735
2004-05	6069	743	5783	739	674	781
2005-06	6154	779	5809	706	639	855
2006-07	6127	884	5844	739	806	816
2007-08	6055	875	5667	683	745	860
2008-09	5873	860	5520	646	735	725
2009-10	5801	793	5505	615	686	718
2010-11	5813	781	5497	680	672	691
2011-12	5640	0	0	0	0	0

DATA HISTORY FOR THE GRAUATE SCHOOL

GRADUATE PROGRAM	HEADCOUNT MAJORS					DEGREES AWARDED (August, December, May***)				
	2007	2008	2009	2010	2011	2007	2008	2009	2010	2011
MA in Studio Art	0	1	1	1	5	1	0	0	2	0
Accounting	9	15	10	12	14	34	26	25	27	29
Business Administration	198	195	130	112	92	58	62	89	83	66
Biochemistry	0	0	0	0	2	0	0	0	0	0
Biology	10	8	4	9	10	1	1	1	2	1
Civil Engineering	31	20	22	22	22	7	16	8	6	8
Chemistry	3	2	3	6	8	2	0	3	1	1
Computer Information Systems	3	3	3	3	3	4	0	4	3	1
Computer Science	64	29	51	60	59	31	24	38	16	38
Doctor of Physical Therapy	59	66	66	71	72	0	16	22	20	22
Electrical Engineering	54	45	36	45	32	29	14	32	14	20
Curriculum & Instruction	21	22	12	10	14	7	13	6	12	3
Leadership in Ed Admin	33	31	32	27	26	7	8	14	15	10
Grd-Counseling	70	72	63	68	63	22	18	30	24	20
English	18	18	22	24	14	5	8	9	7	11
Finance	0	0	1	3	4	0	0	0	0	3
Leadership Human Service Admin	14	13	11	11	13	13	4	8	7	6
Industrial Engineering	15	19	17	9	9	12	8	8	9	5
Mechanical Engineering	76	61	76	68	53	27	44	27	22	43
MFA in Studio Art	11	12	10	8	6	1	3	2	5	4
Manufacturing Engineering	4	4	7	17	31	1	2	2	4	5
Master-Liberal Studies	10	4	4	3	4	6	3	3	0	0
PMA - STEM Education	0	21	34	35	15	0	0	0	0	20
BSN/MSN Nursing	0	0	0	0	2	0	0	0	0	0
Non degree seeking/graduate	0	0	0	0	36	0	0	0	0	0
BSN/MSN Nursing	0	0	0	0	2	0	0	0	0	0
Grd-Nursing	49	40	33	39	34	20	16	16	14	9
Physical Therapy	0	0	0	0	0	14	0	0	0	0
Student-At-Large**	71	68	65	52	0	0	0	0	0	0
Certificate Teaching**	10	21	19	17	18	0	0	0	0	0
XEA	0	0	0	0	2	0	0	0	0	0
Certificate School Counseling**	5	7	7	2	8	0	0	0	0	0
XEI	0	0	0	1	1	0	0	0	0	0
Certificate Nurse Anesthesia**	0	1	1	1	0	0	0	0	0	0
XES	0	0	0	10	11	0	0	0	0	0
TOTAL	752	701	648	663	645	302	286	347	293	325

* Prior to 2004, Art data was reported together

*** i.e. August 06, December 06, May 07 reported under 2007

** Not included in total.

COMPARATIVE ENROLLMENT BY ACADEMIC UNIT

	2002		2003		2004		2005		2006		2007		2008		2009		2010		2011	
	FT	PT	FT	PT	FT	PT	FT	PT	FT	PT	FT	PT	FT	PT	FT	PT	FT	PT	FT	PT
Academic Exploration	326	15	341	13	374	14	335	8	284	5	308	9	305	9	311	5	353	13	321	10
College of Business	969	82	987	80	957	66	942	58	981	50	926	55	860	56	795	50	732	45	682	46
Continuing Education	1	12	0	10	1	11	1	15	1	14	0	8	0	9	0	7	0	6	0	7
Comm & Fine Arts	916	54	913	59	864	44	856	41	815	41	788	45	759	45	800	39	788	41	789	52
Engineering & Tech	703	60	727	49	725	40	754	38	741	38	757	44	729	43	766	30	813	31	802	38
Educ & Health Science	762	80	791	76	859	69	992	65	1031	70	989	56	964	67	1003	62	1015	65	992	52
Liberal Arts & Sci.	1107	103	1168	91	1216	75	1175	89	1157	87	1152	80	1165	64	1126	67	1106	59	1094	70
Total Undergraduate	4784	406	4927	378	4996	319	5055	314	5010	305	4920	297	4782	293	4801	260	4807	260	4680	275
Graduate	254	654	224	608	215	539	208	577	232	580	315	523	258	540	304	436	285	461	290	395
University Total	5038	1060	5151	986	5211	858	5263	891	5242	885	5235	820	5040	833	5105	696	5092	721	4970	670

HISTORICAL ENROLLMENT BY GENDER

	2002		2003		2004		2005		2006		2007		2008		2009		2010		2011	
	M	F	M	F	M	F	M	F	M	F	M	F	M	F	M	F	M	F	M	F
FRESHMEN	516	665	540	636	471	615	522	692	499	630	508	611	498	572	500	635	539	637	477	564
SOPHOMORES	545	630	558	691	568	648	523	621	550	664	529	658	547	617	498	590	509	630	561	625
JUNIORS	664	763	682	789	663	836	648	780	620	737	635	737	608	719	638	697	605	687	586	704
SENIORS	687	767	654	751	709	793	690	877	709	891	697	834	684	821	676	820	695	759	678	753
UNCLASSIFIED	3	10	5	5	8	4	8	8	8	7	2	6	4	5	5	2	4	2	0	7
TOTAL UNDERGRADUATE	2355	2835	2433	2872	2419	2896	2391	2978	2386	2929	2371	2846	2341	2734	2317	2744	2352	2715	2302	2653
GRADUATE	493	415	456	376	335	327	315	339	389	325	408	359	369	361	343	332	331	363	308	341
STUDENT AT LARGE	0	0	0	0	52	40	70	58	48	50	33	38	31	37	29	36	23	29	23	13
TOTALGRADUATE	493	415	456	376	387	367	388	397	437	375	441	397	400	398	372	368	354	392	331	354
TOTAL BY GENDER	2848	3250	2889	3248	2806	3263	2779	3375	2823	3304	2812	3243	2741	3132	2689	3112	2706	3107	2633	3007
UNIVERSITY TOTAL	6098	0	6137	0	6069	0	6154	0	6127	0	6055	0	5873	0	5801	0	5813	0	5640	0

2011 FALL PLACE OF RESIDENCE OF ALL UNDERGRADUATES

TOTAL US	4910	99.1						
ILLINOIS	4350	87.8			CHICAGO METRO (Cook, Lake, Will, Kane, McHenry, Kendall, Du Page)			
OUT OF STATE	560	11.3			2190			
U.S. POSSESSIONS	2	0.0			PEORIA METRO (Peoria, Tazewell, Woodford)			
FOREIGN	43	0.9			1229			
TOTAL UNDERGRADUATES	4955				ST LOUIS METRO (St. Clair, Madison)			
					43			
	<u>STATES</u>						<u>COUNTIES</u>	
ALASKA	2		TEXAS	17	Adams	5	Madison	20
ARIZONA	2		UTAH	1	Boone	23	Marion	2
Armed Forces Pacific	1		VIRGIN ISLANDS	1	Brown	2	Marshall	28
CALIFORNIA	41		VIRGINIA	8	Bureau	15	Mason	16
COLORADO	10		WASHINGTON	3	Calhoun	1	Massac	1
CONNECTICUT	3		WISCONSIN	72	Carroll	1	Mcdonough	4
FLORIDA	8				Cass	2	Mchenry	138
GEORGIA	8				Champaign	20	Mclean	68
HAWAII	1				Christian	9	Menard	3
IDAHO	1				Coles	6	Mercer	9
ILLINOIS	4350				Cook	971	Monroe	5
INDIANA	57				Dekalb	19	Montgomery	4
IOWA	47				Dewitt	7	Morgan	7
KANSAS	8				Dupage	365	Moultrie	1
KENTUCKY	6				Ford	3	Ogle	27
LOUISIANA	3				Franklin	2	Peoria	755
MARYLAND	4				Fulton	27	Piatt	1
MASSACHUSETTS	3				Grundy	16	Pulaski	1
MICHIGAN	14				Hancock	1	Putnam	5
MINNESOTA	50				Henry	40	Rock Island	49
MISSOURI	130				Iroquois	12	Sangamon	74
NEBRASKA	12				Jackson	1	Shelby	1
NEVADA	1				Jefferson	2	St Clair	23
NEW HAMSHIRE	1				Jo Daviess	3	Stark	13
NEW JERSEY	4				Kane	153	Stephenson	7
NEW MEXICO	1				Kankakee	29	Tazewell	395
NEW YORK	5				Kendall	25	Vermilion	7
NORTH DAKOTA	1				Knox	47	Warren	9
OHIO	21				Lake	278	Washington	1
OKLAHOMA	1				Lasalle	67	Whiteside	9
OREGON	2				Lawrence	1	Will	260
PENNSYLVANIA	5				Lee	18	Winnebago	88
PUERTO RICO	1				Livingston	16	Woodford	79
SOUTH CAROLINA	1				Logan	13		
SOUTH DAKOTA	1				Macon	37		
TENNESSEE	4				Macoupin	3		

HEADCOUNT ENROLLMENT BY RACE AND CLASS

Audit only students are not included.

	FALL 2011								FALL 2010							
	Frosh	Soph	Junior	Senior	Non-Deg	Grad	TOTAL	%	Frosh	Soph	Junior	Senior	Non-Deg	Grad	TOTAL	%
Black/African Am.	105	118	105	94	0	20	442	7.8	85	96	105	79	0	23	388	6.7
Native American	10	*	7	12	0	*	33	0.6	12	6	14	22	0	*	58	1.0
Asian	41	58	51	58	*	11	221	3.9	44	43	47	72	*	20	227	3.9
Hispanic	67	64	65	69	0	8	273	4.8	54	51	69	58	0	11	243	4.2
White	799	927	1041	1155	9	424	4355	77.2	614	709	1030	1226	8	428	4015	69.0
Non-Resident Alien	8	8	8	12	0	185	221	3.9	*	*	*	8	0	*	18	0.3
Did not indicate	11	8	13	26	0	36	94	1.7	7	7	7	13	0	200	234	4.0
Total	1041	1186	1290	1426	11	685	5639	100.0	413	260	83	37	*	67	861	14.8

HEADCOUNT ENROLLMENT BY RACE AND GENDER

Audit only students are not included.

	FALL 2011								FALL 2010							
	**** UNDERGRADUATE ****			***** GRADUATE *****			University		**** UNDERGRADUATE ****			***** GRADUATE *****			University	
	Male	Female	Total	Male	Female	Total	Total	%	Male	Female	Total	Male	Female	Total	Total	%
Black/African Am.	137	285	422	9	11	20	442	7.8	108	257	365	7	16	23	388	6.7
Native American	9	23	32	0	*	*	33	0.6	25	29	54	*	*	*	58	1.0
Asian	105	105	210	*	6	11	221	3.9	106	101	207	10	10	20	227	3.9
Hispanic	109	156	265	*	*	8	273	4.8	105	127	232	*	6	11	243	4.2
White	1892	2039	3931	170	254	424	4355	77.2	1732	1855	3587	167	261	428	4015	69.0
Non-Resident Alien	19	17	36	129	56	185	221	3.9	8	8	16	*	*	*	18	0.3
Did not indicate	31	27	58	14	22	36	94	1.7	18	16	34	133	67	200	234	4.0
Total	2302	2652	4954	331	354	685	5639	100.0	343	451	794	30	37	67	861	14.8

HEADCOUNT ENROLLMENT BY AGE GROUP

Audit only students are not included.

	FALL 2011						FALL 2010							
	UNDERGRADUATE		GRADUATE		UNCLASSIFIED	TOTAL	%	UNDERGRADUATE		GRADUATE		UNCLASSIFIED	TOTAL	%
	Full-time	Part-time	Full-time	Part-time				Full-time	Part-time	Full-time	Part-time			
UNDER 18	25	0	0	0	0	25	0.4	21	0	0	0	0	21	0.4
18 - 19	1925	6	0	0	1	1932	34.2	2031	6	0	0	2	2039	35.0
20 - 21	2009	44	4	1	1	2059	36.5	2025	37	6	18	2	2088	35.9
22 - 24	597	86	187	100	0	970	17.2	620	66	177	110	1	974	16.7
25 - 29	78	39	63	118	1	299	5.3	68	43	70	133	0	314	5.4
30 - 34	23	19	13	77	0	132	2.3	18	28	17	69	0	132	2.3
35 - 39	7	25	9	31	0	72	1.3	9	24	10	44	0	87	1.5
40 - 49	13	29	9	48	1	100	1.8	12	29	3	61	0	105	1.8
50 - 64	3	14	5	16	0	38	0.7	3	16	1	20	0	40	0.7
65 AND OVER	0	6	0	4	2	12	0.2	0	5	1	6	1	13	0.2
TOTAL	4680	268	290	395	6	5639	100.0	4807	254	285	461	6	5813	100.0
BY LEVEL		4948		685			0.0		5061		746			0.0

COLLEGE HEADCOUNT ENROLLMENT BY RACE
Students Auditing only are not counted

FALL 2009

	UNIV TOTAL	FULL-TIME									PART-TIME								
		AEP	BUS	CFA	EGT	EHS	LAS	GRAD	CED	TOTAL	AEP	BUS	CFA	EGT	EHS	LAS	GRAD	CED	TOTAL
Black/African Am.	419	60	56	67	18	58	110	8	0	377	*	*	*	*	11	*	17	0	42
Native American	28	0	*	6	*	*	7	*	0	24	0	0	0	0	*	0	*	*	*
Asian	221	8	47	23	23	39	65	*	0	210	0	*	0	0	*	0	7	0	11
Hispanic	232	21	31	39	24	38	57	*	0	212	0	*	*	*	*	*	7	0	20
White	4555	215	645	653	672	852	870	155	0	4062	*	40	30	25	44	58	287	6	493
Non-Resident Alien	228	*	6	*	9	*	*	115	0	143	0	0	*	*	0	0	83	0	85
Did not indicate	117	*	7	9	16	11	13	18	0	77	*	*	*	0	*	*	32	0	40
Total	5800	311	795	800	766	1003	1126	304	0	5105	*	50	39	30	62	67	435	7	695

FALL 2010

	UNIV TOTAL	FULL-TIME									PART-TIME								
		AEP	BUS	CFA	EGT	EHS	LAS	GRAD	CED	TOTAL	AEP	BUS	CFA	EGT	EHS	LAS	GRAD	CED	TOTAL
Black/African Am.	388	44	51	57	19	53	111	8	0	343	*	*	*	*	11	6	15	0	45
Native American	58	*	8	11	9	*	16	*	0	54	0	*	0	0	0	0	*	0	*
Asian	227	18	39	24	29	32	53	*	0	200	*	6	0	0	*	*	15	*	27
Hispanic	243	24	35	35	37	39	55	*	0	228	*	*	*	0	*	*	8	0	15
White	4015	174	534	564	602	752	769	143	0	3538	*	31	34	26	48	44	285	*	477
Non-Resident Alien	18	*	*	0	*	*	7	0	0	15	0	0	0	0	*	0	*	0	*
Total	234	*	11	*	11	*	*	101	0	135	0	0	0	0	0	0	99	0	99
Total	867	108	84	124	133	167	159	25	0	800	*	*	*	*	6	6	43	*	67
Total	6434	15	31	75	62	96	111	*	8	400	81	120	*	7	5817	*	6	0	6034
Total	6050	374	763	817	842	1056	1174	287	0	5313	13	47	41	31	69	61	469	6	737

FALL 2011

	UNIV TOTAL	FULL-TIME									PART-TIME								
		AEP	BUS	CFA	EGT	EHS	LAS	GRAD	CED	TOTAL	AEP	BUS	CFA	EGT	EHS	LAS	GRAD	CED	TOTAL
Black/African Am.	442	58	47	84	25	63	120	*	0	401	*	*	*	*	9	*	16	0	41
Native American	33	*	*	7	*	*	9	*	0	32	0	0	0	0	0	*	0	0	*
Asian	221	11	29	27	36	36	61	6	0	206	*	*	0	0	*	*	*	*	15
Hispanic	273	19	32	52	41	45	64	*	0	255	*	*	*	*	*	*	6	0	18
White	4355	221	557	611	675	835	822	166	0	3887	7	32	42	35	37	53	258	*	468
Non-Resident Alien	221	*	9	*	11	*	*	101	0	135	0	0	0	0	*	0	84	0	86
Did not indicate	94	6	*	*	10	7	13	10	0	54	0	*	*	*	0	*	26	0	40
Total	5639	321	682	789	802	992	1094	290	0	4970	10	46	52	38	52	70	395	6	669

FRESHMAN PROFILE

HIGH SCHOOL RANK	2002		2003		2004		2005		2006		2007		2008		2009		2010		2011	
	#	%	#	%	#	%	#	%	#	%	#	%	#	%	#	%	#	%	#	%
UPPER 1/10	309	31	293	30	279	31	265	27	382	41	245	26	229	26	223	25	240	26	190	25
2/10	266	26	204	21	170	19	200	20	203	21	238	26	218	25	216	24	226	24	154	20
3/10	187	18	152	16	138	15	172	17	141	15	168	18	165	18	161	18	174	19	145	19
4/10	116	11	106	11	118	13	106	11	100	10	108	11	123	14	118	13	123	13	113	15
5/10	60	6	71	7	79	9	78	8	49	5	84	9	58	6	73	8	70	7	72	9
6/10	40	4	51	5	46	5	61	6	39	4	42	4	48	5	42	4	40	4	39	5
7/10	22	2	26	3	26	3	47	5	12	1	18	1	21	2	27	3	23	2	16	2
8/10	8	1	40	4	19	2	37	4	2		4		7		11	1	8		5	
9/10	4		27	3	33	4	31	4			3						4		3	
10/10											1									
NO RANKING	92		133		102		135		146		169		162		235		228		279	
TOTAL RANKED	1012		970		908		997		928		911		869		871		908		737	

ENTRANCE TEST SCORES

	2002	2003	2004	2005	2006	2007	2008	2009	2010	2011
S.A.T VERBAL	600	550	588	571	565	561	563	558	577	562
S.A.T MATH	620	560	602	585	584	574	578	580	589	595
A.C.T COMPOSITE	25.5	25.1	25.0	24.0	25.2	25.1	25.1	24.9	25.3	25.1

2011 FALL PLACE OF RESIDENCE OF ALL FIRST TIME ENTRANTS

TOTAL US	1005	98.7	CHICAGO METRO (Cook, Lake, Will, Kane, McHenry, Kendall, Du Page)			
ILLINOIS	864	84.9	525			
OUT OF STATE	141	13.9	PEORIA METRO (Peoria, Tazewell, Woodford)			
U.S. POSSESSIONS	0	0.0	146			
FOREIGN	13	1.3	ST LOUIS METRO (St. Clair, Madison)			
TOTAL UNDERGRADUATES	1018		9			
	<u>STATES</u>			<u>COUNTIES</u>		
CALIFORNIA	15		Adams	2	Montgomery	1
COLORADO	3		Boone	8	Morgan	5
CONNECTICUT	1		Bureau	6	Ogle	6
FLORIDA	1		Cass	2	Peoria	92
GEORGIA	1		Champaign	6	Pulaski	1
ILLINOIS	864		Christian	1	Putnam	2
INDIANA	15		Coles	1	Rock Island	7
IOWA	13		Cook	220	Sangamon	19
KANSAS	1		Dekalb	6	St Clair	6
KENTUCKY	3		Dewitt	2	Stark	1
LOUISIANA	2		Dupage	87	Stephenson	1
MARYLAND	2		Fulton	5	Tazewell	47
MICHIGAN	4		Grundy	5	Vermilion	2
MINNESOTA	17		Henry	4	Whiteside	2
MISSOURI	27		Iroquois	4	Will	64
NEBRASKA	3		Jefferson	1	Winnebago	18
NEW YORK	2		Jo Daviess	1	Woodford	7
NORTH DAKOTA	1		Kane	24		
OHIO	6		Kankakee	2		
OREGON	1		Kendall	8		
PENNSYLVANIA	1		Knox	4		
TENNESSEE	1		Lake	78		
TEXAS	6		Lasalle	7		
VIRGINIA	1		Lee	4		
WASHINGTON	2		Livingston	4		
WISCONSIN	12		Logan	2		
			Macon	12		
			Macoupin	3		
			Madison	3		
			Marshall	9		
			Mason	1		
			Mchenry	44		
			Mclean	13		
			Menard	1		
			Mercer	2		
			Monroe	1		

STUDY OF PERSISTENCE AND WITHDRAWAL
FIVE YEARS AFTER ENTRANCE
FOR FULL-TIME FRESHMEN ENTERING FALL 2004

	No.	% of Total
Graduated with a Bachelors Degree	721	71.4%
Still Attending After August 2009	28	2.8%
Withdrew	225	22.2%
Scholastic Dismissal	36	3.6%
Disciplinary Dismissal	0	0.0%
Deceased	2	0.2%
Unknown	0	
TOTAL	1012	100.0%

NUMBER OF TIMES	0	1	2	3	4	5	6	7	8	9	10	Total
Number of Changes of Curriculum	619	324	59	9	1	0	0	0	0	0	0	1012
Number of Transfer Sources	275	430	228	67	11	1	0	0	0	0	0	1012
Number of Bradley Summer Sessions	224	181	170	162	114	74	39	19	14	8	7	1012
Number of Bradley Regular Semesters Attended	0	39	82	35	42	11	24	38	525	112	104	1012
Number of Dismissals	964	40	8	0	0	0	0	0	0	0	0	1012

GRADUATION RATES

Freshmen Entering Year	1995	1996	1997	1998	1999	2000	2001	2002	2003	2004	Average
Four Year Rate	45.9	45.7	49.4	61.9	62.6	52.4	53.5	54.3	52.4	54.2	58.1
Five Year Rate	63.6	68.5	69.1	71.2	70.6	71.1	73.6	75.9	73.4	71.4	77.5
Six Year Rate	66.2	70.2	71.3	71.9	72.7	72.6	75.9	78.2	76.8	73.1	79.6

SUMMARY OF CLASS CHANGES (Adds/Drops)

	FALL 2010					SPRING 2011					FALL 2009					SPRING 2010				
	1	2	3	4	TOTAL	1	2	3	4	TOTAL	1	2	3	4	TOTAL	1	2	3	4	TOTAL
CHANGES*	558	444	501	524	2027	339	412	451	513	1715	521	449	559	558	2087	387	378	459	618	1842
ADDING*	38	51	69	117	275	29	60	82	108	279	36	60	80	91	267	26	60	66	125	277
DROPPING*	290	236	222	200	948	208	216	235	197	856	328	224	259	242	1053	238	180	228	226	872
ADDING/DROPPING*	230	157	210	207	804	102	136	134	208	580	157	165	220	225	767	123	138	165	267	693
TOTAL ADDS	9453	9112	9803	9751	38119	6633	8069	8535	10150	33387	8878	8887	9955	10231	37951	6625	6962	8537	10460	32584
TOTAL DROPS	2025	2926	3028	2622	10601	2080	2425	2192	2399	9096	1866	3099	2960	2889	10814	1937	1959	2067	2358	8321
SECTION EXCHANGE*	88	92	114	75	369	52	82	75	73	282	61	102	78	54	295	63	64	68	72	267
ADD LTR DROP	368	378	334	432	1512	303	305	291	446	1345	357	318	343	424	1442	263	244	271	408	1186
STUDENTS DROP/NON-PAY	19	29	26	47	121	12	20	30	47	109	8	24	30	58	120	6	14	26	47	93
CLASSES DROP/NON-PAY	115	113	220	121	569	78	123	135	170	506	58	135	141	224	558	39	83	136	167	425

NOTE: CLASS in all cases is before grades are calculated for the semester.
 Unclassified undergraduates and graduate students are not included.
 * = After the beginning of classes

SCHEDULE OF REVISIONS AFTER EARLY REGISTRATION

	FALL 2010		SPRING 2011		FALL 2009		SPRING 2010	
	ADDS	DROPS	ADDS	DROPS	ADDS	DROPS	ADDS	DROPS
WEEK 1	1580	1257	1227	880	1448	1122	1347	949
WEEK 2	113	210	58	103	100	192	84	189
WEEK 3	42	65	51	74	35	73	33	55
WEEK 4	36	86	29	59	34	108	21	63
WEEK 5	19	77	38	89	32	94	13	75
WEEK 6	20	108	18	95	15	115	21	74
WEEK 7	10	61	14	103	2	80	14	88
WEEK 8	9	143	1	7	11	161	3	13
WEEK 9	11	152	24	149	9	159	10	97
WEEK 10	21	173	13	129	11	193	9	103
WEEK 11	8	157	36	154	4	168	5	146
WEEK 12	3	373	0	156	15	407	8	210
WEEK 13	0	0	0	353	27	31	1	354
WEEK 14	0	11	3	15	2	9	1	4
WEEK 15+	1	21	4	28	1	14	13	13
CANCEL NON/PAY	0	569	0	506	0	558	0	425
EARLY REGISTRAION	36247	7138	31872	6196	36205	7330	31001	5463

GRADEPOINT PROFILE

Average of Grades Issued to **Full-Time** Undergraduates

Year	Semester	Full-Time Undergraduate Students				
		Freshmen	Sophomores	Juniors	Seniors	All
1998-99	FALL	2.82	2.92	2.98	3.18	2.98
	SPRING	2.86	3.03	3.02	3.18	3.03
1999-00	FALL	2.83	2.95	3.08	3.20	3.02
	SPRING	2.93	3.04	3.08	3.15	3.06
2000-01	FALL	2.85	2.96	3.06	3.18	3.01
	SPRING	3.00	3.05	3.11	3.22	3.11
2001-02	FALL	2.85	2.97	3.04	3.18	3.03
	SPRING	2.99	3.05	3.10	3.23	3.10
2002-03	FALL	2.93	3.04	3.07	3.24	3.07
	SPRING	3.00	3.09	3.09	3.23	3.11
2003-04	FALL	2.81	2.94	3.08	3.18	3.03
	SPRING	2.93	3.07	3.14	3.25	3.11
2004-05	FALL	2.85	2.95	3.09	3.24	3.07
	SPRING	2.97	3.07	3.16	3.27	3.14
2005-06	FALL	2.93	3.02	3.12	3.29	3.10
	SPRING	2.96	3.10	3.14	3.28	3.14
2006-07	FALL	3.00	3.01	3.09	3.26	3.10
	SPRING	2.99	3.11	3.14	3.27	3.15
2007-08	FALL	2.96	3.06	3.10	3.26	3.10
	SPRING	2.94	3.12	3.16	3.28	3.14
2008-09	FALL	2.92	3.00	3.17	3.29	3.11
	SPRING	2.94	3.13	3.19	3.32	3.17
2009-10	FALL	2.88	3.00	3.12	3.32	3.09
	SPRING	2.94	3.13	3.16	3.33	3.17
2010-11	FALL	2.97	3.00	3.14	3.34	3.12
	SPRING	2.96	3.13	3.15	3.31	3.16

ACADEMIC DISMISSALS

Year Semester	Undergraduate Students										Graduate %**	University Total		
	Full-Time %* Total		Full-Time %** Freshmen		Full-Time %** Sophomores		Full-Time %** Juniors		Full-Time %** Seniors				Part-Time	
2002-03 FALL	24	0.5	6	0.5	11	1.0	5	0.4	2	0.2	9	3	0.6	36
2002-03 SPRING	46	1.0	27	2.9	10	1.0	6	0.5	3	0.2	4	2	0.2	52
2003-04 FALL	25	0.5	0	0.0	16	1.3	7	0.5	2	0.2	3	3	0.4	31
2003-04 SPRING	55	1.2	36	3.8	7	0.7	10	0.8	2	0.2	4	0	0.0	59
2004-05 FALL	30	0.6	6	0.7	13	1.2	8	0.6	3	0.2	6	5	0.7	41
2004-05 SPRING	38	0.8	23	2.8	8	0.8	4	0.3	3	0.2	4	4	0.5	46
2005-06 FALL	20	0.4	9	0.8	7	0.6	1	0.1	3	0.2	5	2	0.3	27
2005-06 SPRING	39	0.8	19	2.0	6	0.6	12	0.9	2	0.1	5	3	0.4	47
2006-07 FALL	14	0.3	2	0.2	7	0.6	4	0.3	1	0.1	2	2	0.2	18
2006-07 SPRING	51	1.1	26	3.0	18	1.7	5	0.4	2	0.1	4	13	1.5	68
2007-08 FALL	23	0.5	5	0.5	9	0.8	7	0.5	2	0.2	4	11	1.3	38
2007-08 SPRING	46	1.0	23	2.7	10	1.0	9	0.7	4	0.3	4	8	1.0	58
2008-09 FALL	14	0.3	5	0.5	5	0.5	1	0.1	3	0.2	4	4	0.5	22
2008-09 SPRING	52	1.2	36	4.4	6	0.6	8	0.7	2	0.1	5	10	1.3	67
2009-10 FALL	20	0.4	5	0.4	11	1.0	4	0.3	0	0.0	1	8	1.1	29
2009-10 SPRING	63	1.4	41	4.7	10	1.1	10	0.9	2	0.1	2	10	1.3	75
2010-11 FALL	20	0.4	6	0.5	10	0.9	2	0.2	2	0.2	2	10	1.3	32
2010-11 SPRING	53	1.2	33	3.9	13	1.3	6	0.5	1	0.1	2	7	0.9	62

SCHOLASTIC PROBATION Undergraduates						
Undergraduates			Graduate	University		
Full-Time	Part-Time	Total				
2004-05 Fall	168	12	180	11	191	
2004-05 Spring	92	7	99	7	106	
2004-05 Total	260	19	279	18	297	
2005-06 Fall	167	9	176	17	193	
2005-06 Spring	79	4	83	23	106	
2005-06 Total	246	13	259	40	299	
2006-07 Fall	157	13	170	42	212	
2006-07 Spring	84	10	94	65	159	
2006-07 Total	241	23	264	107	371	
2007-08 Fall	149	7	156	37	193	
2007-08 Spring	73	6	79	20	99	
2007-08 Total	222	13	235	57	292	
2008-09 Fall	154	8	162	24	186	
2008-09 Spring	66	10	76	10	86	
2008-09 Total	220	18	238	34	272	
2009-10 Fall	190	7	197	17	214	
2009-10 Spring	75	6	81	16	97	
2009-10 Total	265	13	278	33	311	
2010-11 Fall	163	5	168	17	185	
2010-11 Spring	70	3	73	11	84	
2010-11 Total	233	8	241	28	269	

DEGREES				
		Undergrad	Grad	Total
2004-05 August		98	53	151
2004-05 Fall		236	67	303
2004-05 Spring		839	132	971
2004-05 Total		1173	252	1425
2005-06 August		126	60	186
2005-06 Fall		245	102	347
2005-06 Spring		848	148	996
2005-06 Total		1219	310	1529
2006-07 August		115	69	184
2006-07 Fall		271	63	334
2006-07 Spring		903	170	1073
2006-07 Total		1289	302	1591
2007-08 August		89	56	145
2007-08 Fall		268	91	359
2007-08 Spring		829	139	968
2007-08 Total		1186	286	1472
2008-09 August		97	74	171
2008-09 Fall		226	122	348
2008-09 Spring		846	149	995
2008-09 Total		1169	345	1514
2009-10 August		102	58	160
2009-10 Fall		228	69	297
2009-10 Spring		843	165	1008
2009-10 Total		1173	292	1465
2010-11 August		98	56	154
2010-11 Fall		241	79	320
2010-11 Spring		814	187	1001
2010-11 Total		1153	322	1475

Freshman to Sophomore Retention: Ten Year Overview

	Cohort Year									
	2001	2002	2003	2004	2005	2006	2007	2008	2009	2010
Enrollment	1100	1111	1104	1012	1132	1074	1080	1031	1106	1136
Avg ACT	25	25.1	25.1	25.2	25	25	25	25.1	24.4	24.3
Avg SAT	1184	1209	1147	1183	1157	1147	1135	1141	1138	1166
Retention	943	985	985	885	990	956	951	896	964	979
	85.73%	88.66%	89.22%	87.45%	87.46%	89.01%	88.06%	86.91%	87.16%	86.18%
Voluntary	131	107	97	111	127	99*	111	104*	112	133
Withdrawal	11.91%	9.63%	8.79%	10.97%	11.22%	9.22%	10.28%	10.09%	10.13%	11.71%
Academic	26	19	22	16	15	19	18	31	30	24
Dismissal	2.36%	1.71%	1.99%	1.58%	1.32%	1.77%	1.66%	3.01%	2.71%	2.11%
Males	503	479	500	420	484	466	482	471	480	512
Females	597	632	604	592	648	608	598	560	626	624
Race										
Am Indian	4	2	2	2	2	3	6	5	4	3
Afr Amer	41	61	73	58	75	68	73	116	124	90
Asian	27	37	40	32	37	45	49	44	47	46
Hispanic	17	31	31	20	40	29	46	48	59	72
Caucasian	944	889	923	872	958	910	895	800	863	898
Unknwn/Oth	67	91	35	28	20	19	11	18	9	5
Haw/Pac Isl	–	–	–	–	–	–	–	–	–	3
Two or More	–	–	–	–	–	–	–	–	–	19
College										
AEP	227	213	232	220	222	176	211	196	204	221
BUS	146	153	135	124	145	184	132	120	99	92
CFA	193	181	184	158	153	161	150	143	172	169
EGT	198	168	178	144	192	158	179	175	179	197
EHS	127	145	143	136	206	210	194	167	230	237
LAS	209	251	232	230	214	185	214	230	222	220

*Includes one deceased student.

Bradley University
Financial Indicators

	2003	2004	2005	2006	2007	2008	2009	2010	2011
Demand									
Freshmen									
Applications Received	5,505	5,203	5,757	5,503	5,187	5,720	5,932	6,221	6,343
Acceptance Rate	67.5%	68.6%	64.3%	69.4%	68.8%	67.2%	64.3%	73.5%	71.7%
Contribution Ratios									
% of Current Fund Revenues									
Tuition and Fees	57.0%	56.0%	58.9%	60.5%	60.6%	57.7%	59.0%	61.9%	62.5%
Contributions	2.5%	7.1%	5.2%	2.5%	2.9%	2.6%	1.4%	0.9%	0.1%
Investment Return for Operations	7.0%	7.6%	7.7%	8.3%	8.4%	10.5%	7.0%	6.4%	6.0%
Auxiliary Income	17.2%	16.5%	16.5%	16.6%	16.7%	15.5%	16.1%	16.6%	16.4%
Market Value of Investments (\$000's)									
Endowment Funds	136,329	163,886	185,450	208,089	245,507	242,512	172,618	202,044	237,122
Annuities and Funds Held in Trust	9,055	9,205	9,285	10,301	11,462	11,857	9,493	9,759	10,230
Liquidity Indicators									
Cash and Cash Equivalents (000's)	2,116	6,569	4,148	7,569	11,641	17,901	30,048	13,442	412
Cash and Investments to Operations	140.7%	166.2%	182.0%	204.0%	231.4%	216.6%	163.4%	172.8%	173.2%
Debt to Equity	27.8%	21.8%	20.5%	16.4%	34.6%	32.7%	39.4%	35.8%	31.7%
Other selected data									
Full-time Equivalent Enrollment	5,391	5,480	5,497	5,560	5,537	5,508	5,318	5,337	5,332
Total University Assets, Net (\$000's)	217,832	249,166	268,624	310,331	366,473	386,135	322,356	353,202	389,146
Total Gifts (\$000's)	8,086	13,682	10,288	10,136	10,736	18,312	16,151	15,880	13,841

Copies of the University's audited 2010-11 annual financial report and additional information are available through the Office of the Vice President for Business Affairs, 1501 W Bradley Ave, Peoria IL 61625