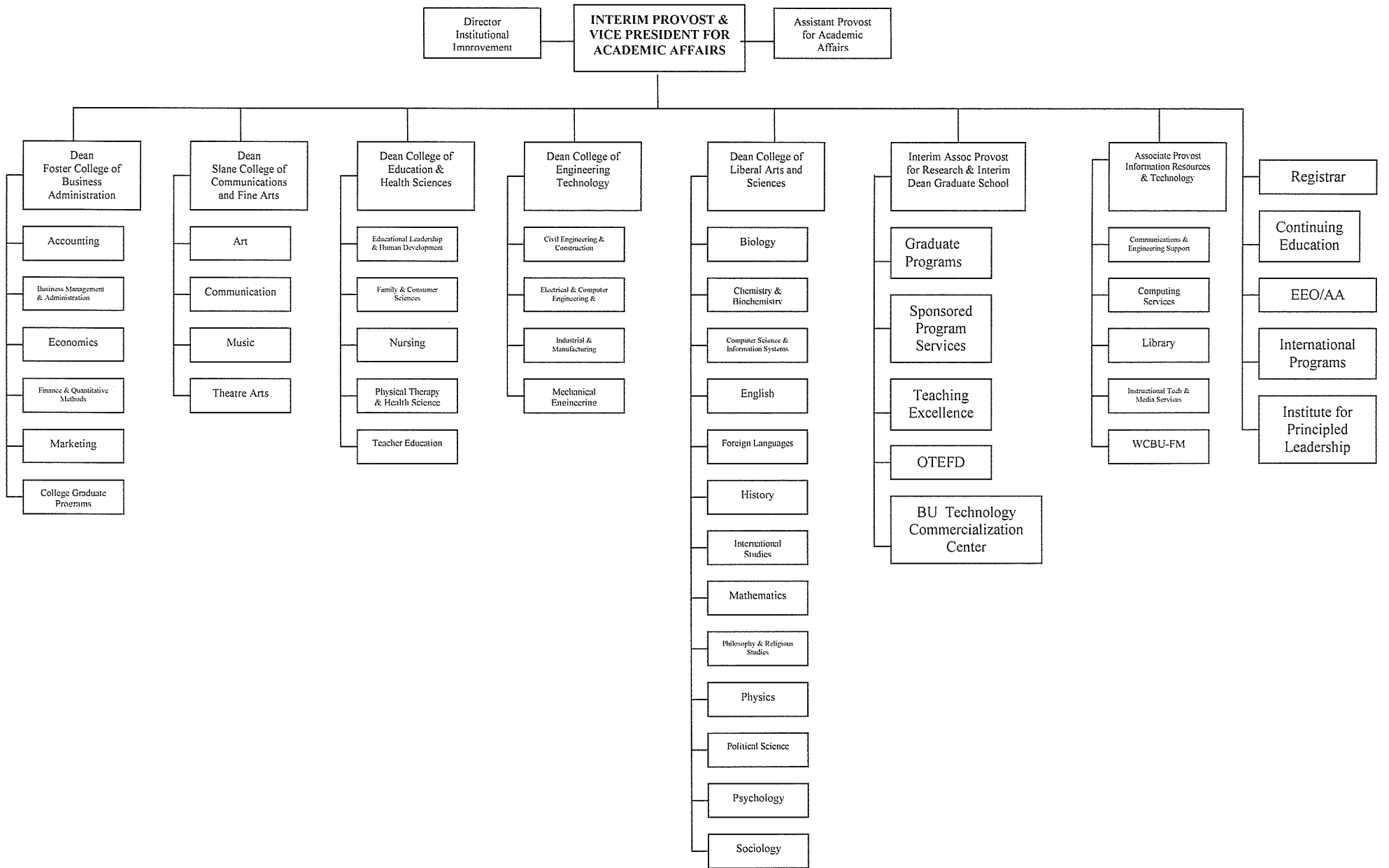


**BRADLEY**  
UNIVERSITY

**ORGANIZATIONAL CHART**  
December 2009



ENTERING STUDENTS NEW TO BRADLEY Full-Time Students		
Fall Term	First-Time Students	Transfers
1999	1079	363
2000	1089	321
2001	1110	352
2002	1112	320
2003	1105	366
2004	1014	378
2005	1136	354
2006	1075	354
2007	1080	311
2008	1032	287
2009	1106	303

FALL SEMESTER ENROLLMENT Undergraduate and Graduate		
Fall Term	Undergrad Students	Graduate Students
1999	4961	876
2000	5116	835
2001	5167	829
2002	5190	908
2003	5305	832
2004	5315	754
2005	5369	785
2006	5315	812
2007	5217	838
2008	5075	798
2009	5061	740

FALL SEMESTER ENROLLMENT Full-Time or Part-Time Status			
Fall Term	Full-Time Students	Part-Time Students	F.T.E
1999	4641	1196	5040
2000	4827	1124	5201
2001	4923	1073	5281
2002	5038	1060	5391
2003	5151	986	5480
2004	5211	858	5497
2005	5263	891	5560
2006	5242	885	5537
2007	5235	820	5508
2008	5040	833	5318
2009	5105	696	5337

SUMMER SCHOOL & INTERIM ENROLLMENT				
Year	January	May I & II	Summer I & II	Total
1999	763	772	1528	3063
2000	749	776	1465	2990
2001	891	705	1571	3167
2002	699	664	1418	2781
2003	744	680	1427	2851
2004	739	720	1331	2790
2005	743	739	1455	2937
2006	779	706	1494	2979
2007	884	739	1622	3245
2008	875	683	1605	3163
2009	860	646	1460	2966

COMPARATIVE ALL-UNIVERSITY ENROLLMENTS FOR FALL SEMESTERS

A-4

Example of Stay Rate: 2004 Sophomores/2003 Freshmen = Stay Rate

% Percent of change is change from previous year.

FALL OF		DAY ENROLLMENT								Total Under-Graduate	All Graduate Students	Evening Undergrad Students	All Full-Time Students Day & Eve	Total Head-Count	All Part-Time	F.T.E using Pt/3	New Day Entrants (First time)	New Day Transfer Students	Tuition
		Freshmen	Soph Stay Rate	Sophomores	Junior Stay Rate	Juniors	Senoir Stay Rate	Seniors	Unclassified										
2000	Total	1168	99.4	1162	110.0	1210	99.9	1239	12	4791	835	325	4827	5951	1124	5202	1087	288	\$14500/Yr.
	Returning	77		1062		1033		1232		% change									1-7 \$394/SH
	Transfer	25		79		177		7		3.19	-4.68	2.20	4.01	1.95	-6.02	3.21	1.02	-12.20	7.5-11.5 \$489/SH
	New Students	1066		21		0		0											
2001	Total	1190	102.8	1201	117.3	1363	115.7	1400	13	5167	829	300	4923	5996	1073	5281	1107	317	\$15230/Yr.
	Returning	71		1080		1158		1383		% change									1-7 \$415/SH
	Transfer	18		112		205		17		7.85	-0.72	-7.69	1.99	0.76	-4.54	1.52	1.84	10.07	7.5-11.5 \$515/SH
	New Students	1101		9		0		0											
2002	Total	1176	94.5	1124	112.7	1354	89.7	1223	11	4888	908	324	5038	6098	1060	5391	1110	292	\$16000/Yr.
	Returning	64		1024		1153		1212		% change									1-7 \$435/SH
	Transfer	18		84		201		11		-5.40	9.53	8.00	2.34	1.70	-1.21	2.10	0.27	-7.89	7.5-11.5 \$540/SH
	New Students	1094		16		0		0											
2003	Total	1169	103.5	1217	124.0	1394	92.8	1257	7	5044	832	261	5151	6137	986	5480	1098	348	\$16800/Yr.
	Returning	48		1099		1198		1246		% change									1-7 \$460/SH
	Transfer	27		114		196		11		3.19	-8.37	-19.44	2.24	0.64	-6.98	1.64	-1.08	19.18	7.5-11.5 \$565/SH
	New Students	1094		4		0		0											
2004	Total	1082	102.7	1200	117.7	1433	97.6	1360	11	5086	754	229	5211	6069	858	5497	1013	362	\$17600/Yr.
	Returning	65		1061		1234		1340		% change									1-7 \$480/SH
	Transfer	17		126		199		20		0.83	-9.38	-12.26	1.16	-1.11	-12.98	0.32	-7.74	4.02	7.5-11.5 \$590/SH
	New Students	1000		13		0		0											
2005	Total	1208	103.0	1115	112.6	1351	99.5	1426	14	5114	785	255	5263	6154	891	5560	1130	338	\$18700/Yr. Frosh
	Returning	55		991		1172		1414		% change									\$18500-Cont&Tran
	Transfer	36		111		179		12		0.55	4.11	11.35	1.00	1.40	3.85	1.15	11.55	-6.63	1-7 \$510/SH
	New Students	1117		13		0		0											7.5-11.5 \$620/SH
2006	Total	1118	98.0	1193	116.0	1297	105.0	1427	12	5047	812	268	5242	6127	885	5537	1067	334	SEE NOTE BELOW
	Returning	63		1058		1102		1411		% change									
	Transfer	9		115		194		16		-1.31	3.44	5.10	-0.40	-0.44	-0.67	-0.41	-5.58	-1.18	
	New Students	1046		20		1		0											
2007	Total	1114	104.0	1166	110.0	1313	106.0	1380	7	4980	838	237	5235	6055	820	5508	1076	286	\$21,000 Fr, Soph, Jr
	Returning	46		1044		1157		1364		% change									\$21,000 Sr.
	Transfer	20		95		155		16		-1.33	3.20	-11.57	-0.13	-1.18	-7.34	-0.52	0.84	-14.37	1-7 hrs \$580 per hr
	New Students	1048		27		1		0											8-11 \$700 UG \$580 GR
2008	Total	1061	102.0	1147	108.0	1267	103.0	1361	6	4842	798	233	5040	5873	833	5317	1024	273	
	Returning	39		1039		1110		1351		% change									
	Transfer	17		89		157		10		-2.77	-4.77	-1.69	-3.72	-3.01	1.59	-3.46	-4.83	-4.55	
	New Students	1005		19		0		0											
2009	Total	1134	100.0	1069	112.0	1289	109.0	1383	6	4881	740	180	5105	5801	696	5337	1106	283	\$23,950 Fr, Soph, Jr
	Returning	35		970		1112		1369		% change									\$23,950 Sr.
	Transfer	15		77		177		14		0.81	-7.27	-22.75	1.29	-1.23	-16.45	0.36	8.01	3.66	1-7 hrs \$650/SH
	New Students	1084		22		0		0											7.5-11.5 \$780/SH

2006: \$19,900 Frosh/Soph, \$19,700 All other UG, 1-7 hours \$550./SH, 7.5+ hours \$660./SH, GRAD 1-7 hours \$550./SH, 7.5+ hours \$565./SH

FIVE YEAR COMPARISON OF STUDENT LOAD BY CLASS

FALL SEMESTERS

	2005				2006				2007				2008				2009			
	12+ SH	<12 SH	% <12	Total	12+ SH	<12 SH	% <12	Total	12+ SH	<12 SH	% <12	Total	12+ SH	<12 SH	% <12	Total	12+ SH	<12 SH	% <12	Total
Class 1	1206	8	0.7	1214	1125	4	0.4	1129	1116	3	0.3	1119	1064	6	0.6	1070	1133	2	0.2	1135
Class 2	1121	23	2.0	1144	1190	24	2.0	1214	1173	14	1.2	1187	1135	29	2.5	1164	1072	16	1.5	1088
Class 3	1344	84	5.9	1428	1280	77	5.7	1357	1286	86	6.3	1372	1253	74	5.6	1327	1265	70	5.2	1335
Class 4	1383	184	11.7	1567	1414	186	11.6	1600	1344	187	12.2	1531	1330	175	11.6	1505	1331	165	11.0	1496
Class 5	33	624	95.0	657	40	674	94.4	714	37	730	95.2	767	43	687	94.1	730	46	629	93.2	675
Class 6	2	126	98.4	128	1	97	99.0	98	0	71	100.0	71	3	65	95.6	68	2	63	96.9	65
Unclass.	1	15	93.8	16	1	14	93.3	15	0	8	100.0	8	0	9	100.0	9	0	7	100.0	7
ALL 12+ SH	5090				5051				4956				4828				4849			
< 12 SH	1064				1076				1099				1045				952			
Headcount	6154				6127				6055				5873				5801			

F.T.E. MAJORS BY ACADEMIC UNIT Undergraduate Students							
Fall Term	Bus. Adm.	Com & Fine Arts	Edu & H. S.	Engr & Tech	LAS	Cont Educ	AEP
1999	838	863	738	717	1363	9	476
2000	903	929	750	763	1402	6	459
2001	980	971	755	762	1459	4	382
2002	1005	1011	798	725	1522	5	331
2003	1025	1007	823	747	1542	3	345
2004	1000	945	901	743	1501	4	378
2005	980	922	1032	768	1419	6	337
2006	998	829	1054	754	1186	6	286
2007	944	803	1008	772	1179	3	311
2008	879	774	986	743	1186	3	308
2009	812	813	1024	776	1148	2	

COURSE ENROLLMENTS BY ACADEMIC UNIT (Fall and Spring Semesters)					
Year	Bus. Adm.	Com & Fine Arts	Edu & H.S.	Engr & Tech	LAS
1999-10	9,515	8,232	6,400	5,642	21,670
2000-1	9,852	8,575	6,291	5,731	22,441
2001-2	10,504	8,692	6,618	5,451	22,837
2002-3	10,954	8,758	7,011	5,550	23,072
FA 2003	5,696	4,467	4,187	2,896	12,129
SP 2004	5,335	4,254	3,225	2,809	11,321
FA 2004	5,665	4,404	4,525	2,894	11,842
SP 2005	5,454	4,109	3,732	2,763	11,076
FA 2005	5,502	4,529	5,022	3,039	12,556
SP 2006	5,479	4,149	4,260	2,907	11,182
FA 2006	5,653	4,340	5,266	2,890	12,347
SP 2007	5,287	4,121	4,416	2,862	11,259
FA 2007	5,638	4,567	5,330	3,113	12,130
SP 2008	5,253	4,219	4,438	2,833	10,988
FA 2008	5,354	4,385	5,320	2,896	11,862
SP 2009	4,931	4,042	4,555	2,792	10,576
FA 2009	4,970	4,574	5,102	3,148	12,067

# ENROLLMENT REPORT

A-7

## Fall Semester 2009

	TOTAL	Day Students	Evening Students	Full-Time Students	Part-Time Students	Men	Women
Freshmen	1135	1134	1	1133	2	500	635
Sophomores	1088	1069	19	1072	16	498	590
Juniors	1335	1289	46	1265	70	638	697
Seniors	1496	1383	113	1331	165	676	820
Unclassified	7	6	1	0	7	5	2
<b>UNDERGRADUATE</b>	<b>5061</b>	<b>4881</b>	<b>180</b>	<b>4801</b>	<b>260</b>	<b>2317</b>	<b>2744</b>
Graduate Students Degree Programs	675	355	320	300	375	343	332
At-Large	65	38	27	4	61	29	36
<b>GRADUATE</b>	<b>740</b>	<b>393</b>	<b>347</b>	<b>304</b>	<b>436</b>	<b>372</b>	<b>368</b>
<b>UNIVERSITY</b>	<b>5801</b>	<b>5274</b>	<b>527</b>	<b>5105</b>	<b>696</b>	<b>2689</b>	<b>3112</b>
First-Time Entrants	1106	1106	0	1106	0	480	626
New Transfers	303	283	20	273	30	140	163
<b>TOTAL</b>	<b>1409</b>	<b>1389</b>	<b>20</b>	<b>1379</b>	<b>30</b>	<b>620</b>	<b>789</b>

## Fall Semester 2008

	TOTAL	Day Students	Evening Students	Full-Time Students	Part-Time Students	Men	Women
Freshmen	1070	1061	9	1064	6	498	572
Sophomores	1164	1147	17	1135	29	547	617
Juniors	1327	1267	60	1253	74	608	719
Seniors	1505	1361	144	1330	175	684	821
Unclassified	9	6	3	0	9	4	5
<b>UNDERGRADUATE</b>	<b>5075</b>	<b>4842</b>	<b>233</b>	<b>4782</b>	<b>293</b>	<b>2341</b>	<b>2734</b>
Graduate Students Degree Programs	730	336	394	251	479	369	361
At-Large	68	34	34	7	61	31	37
<b>GRADUATE</b>	<b>798</b>	<b>370</b>	<b>428</b>	<b>258</b>	<b>540</b>	<b>400</b>	<b>398</b>
<b>UNIVERSITY</b>	<b>5873</b>	<b>5212</b>	<b>661</b>	<b>5040</b>	<b>833</b>	<b>2741</b>	<b>3132</b>
First-Time Entrants	1032	1024	8	1031	1	471	561
New Transfers	287	273	14	262	25	137	150
<b>TOTAL</b>	<b>1319</b>	<b>1297</b>	<b>22</b>	<b>1293</b>	<b>26</b>	<b>608</b>	<b>711</b>

### REPORT ON EARLY REGISTRATION

	Apr- 2004 for Fall 2004	Nov- 2004 for Spring 2005	Apr- 2005 for Fall 2005	Nov- 2005 for Spring 2006	Apr- 2006 for Fall 2006	Nov- 2006 for Spring 2007	Apr- 2007 for Fall 2007	Nov- 2007 for Spring 2008	Apr- 2008 for Fall 2008	Nov- 2008 for Spring 2009	Apr- 2009 for Fall 2009
Students Participated in Early Registration	4137	5017	4200	5171	4208	5238	4240	5139	4097	4909	3948
Undergraduate Students	3928	4754	3941	4807	3925	4740	3825	4647	3742	4472	3639
Graduate Students	209	263	259	364	283	498	415	492	355	437	309
<b>FINAL REGISTRATION</b>											
Headcount	6069	5783	6154	5809	6127	5844	6055	5667	5873	5520	5801
Full-Time	5211	4887	5263	4952	5242	4903	5235	4861	5040	4722	5105



# ENROLLMENT REPORT

A-9

## Fall Semester 2008

	TOTAL	Day Students	Evening Students	Full-Time Students	Part-Time Students	Men	Women
Freshmen	1070	1061	9	1064	6	498	572
Sophomores	1164	1147	17	1135	29	547	617
Juniors	1327	1267	60	1253	74	608	719
Seniors	1505	1361	144	1330	175	684	821
Unclassified	9	6	3	0	9	4	5
<b>UNDERGRADUATE</b>	<b>5075</b>	<b>4842</b>	<b>233</b>	<b>4782</b>	<b>293</b>	<b>2341</b>	<b>2734</b>
Graduate Students Degree Programs	730	336	394	251	479	369	361
At-Large	68	34	34	7	61	31	37
<b>GRADUATE</b>	<b>798</b>	<b>370</b>	<b>428</b>	<b>258</b>	<b>540</b>	<b>400</b>	<b>398</b>
<b>UNIVERSITY</b>	<b>5873</b>	<b>5212</b>	<b>661</b>	<b>5040</b>	<b>833</b>	<b>2741</b>	<b>3132</b>
First-Time Entrants	1032	1024	8	1031	1	471	561
New Transfers	287	273	14	262	25	137	150
<b>TOTAL</b>	<b>1319</b>	<b>1297</b>	<b>22</b>	<b>1293</b>	<b>26</b>	<b>608</b>	<b>711</b>

## Spring Semester 2009

	TOTAL	Day Students	Evening Students	Full-Time Students	Part-Time Students	Men	Women
Freshmen	825	822	3	819	6	364	461
Sophomores	1019	1004	15	994	25	488	531
Juniors	1286	1243	43	1202	84	587	699
Seniors	1630	1470	160	1451	179	742	888
Unclassified	5	5	0	1	4	1	4
<b>UNDERGRADUATE</b>	<b>4765</b>	<b>4544</b>	<b>221</b>	<b>4467</b>	<b>298</b>	<b>2182</b>	<b>2583</b>
Graduate Students Degree Programs	693	331	362	250	443	331	362
At-Large	62	33	29	5	57	26	36
<b>GRADUATE</b>	<b>755</b>	<b>364</b>	<b>391</b>	<b>255</b>	<b>500</b>	<b>357</b>	<b>398</b>
<b>UNIVERSITY</b>	<b>5520</b>	<b>4908</b>	<b>612</b>	<b>4722</b>	<b>798</b>	<b>2539</b>	<b>2981</b>
First-Time Entrants	2	2	0	2	0	1	1
New Transfers	76	72	4	64	12	37	39
<b>TOTAL</b>	<b>78</b>	<b>74</b>	<b>4</b>	<b>66</b>	<b>12</b>	<b>38</b>	<b>40</b>

## COMPARISON OF ENROLLMENT BETWEEN FIRST AND SECOND SEMESTERS

	FR	SO	JR	SR	UNCL	UNDER GRADS	GRADS	FULL TIME	PART TIME	F.T.E.	HEADCOUNT
2006 - 2007											
1ST SEM											
TOTAL	1129	1214	1357	1600	15	5315	812	5242	885	5537	6127
RETURNING	66	1073	1151	1581	15	3886	521	3766	640		
NEW ENTRANTS	1054	20	1	0	0	1075	291	1161	206		
NEW TRANSFERS	9	121	205	19	0	354	0	315	39		
Semester Difference %	-27.1	-13.4	-6.5	8.7	-87.5	-6.5	4.6	-6.9	6.0	-6.1	-4.8
2ND SEM											
TOTAL	888	1071	1274	1752	8	4993	851	4903	941	5216	5844
RETURNING	874	1051	1225	1743	8	4901	677	4800	778		
NEW ENTRANTS	2	0	0	0	0	2	174	32	144		
NEW TRANSFERS	12	20	49	9	0	90	0	71	19		
2007 - 2008											
1ST SEM											
TOTAL	1119	1187	1372	1531	8	5217	838	5235	820	5508	6055
RETURNING	47	1059	1199	1513	8	3826	569	3766	629		
NEW ENTRANTS	1052	27	1	0	0	1080	269	1196	153		
NEW TRANSFERS	20	101	172	18	0	311	0	273	38		
Semester Difference %	-29.8	-13.8	-3.0	5.8	11.1	-7.1	-5.3	-7.7	-1.7	-7.4	-6.9
2ND SEM											
TOTAL	862	1043	1332	1625	9	4871	796	4861	806	5129	5667
RETURNING	851	1024	1292	1621	9	4797	690	4782	705		
NEW ENTRANTS	2	0	0	0	0	2	106	22	86		
NEW TRANSFERS	9	19	40	4	0	72	0	57	15		
2008 - 2009											
1ST SEM											
TOTAL	1070	1164	1327	1505	9	5075	798	5040	833	5317	5873
RETURNING	40	1053	1160	1494	9	3756	555	3642	669		
NEW ENTRANTS	1013	19	0	0	0	1032	243	1136	139		
NEW TRANSFERS	17	92	167	11	0	287	0	262	25		
Semester Difference %	-29.7	-14.2	-3.2	7.7	-80.0	-6.5	-5.7	-6.7	-4.4	-6.6	-6.4
2ND SEM											
TOTAL	825	1019	1286	1630	5	4765	755	4722	798	4988	5520
RETURNING	814	998	1243	1627	5	4687	627	4624	690		
NEW ENTRANTS	2	0	0	0	0	2	128	34	96		
NEW TRANSFERS	9	21	43	3	0	76	0	64	12		

**REGISTRATION REPORT**  
INTERIMS AND SUMMER SESSIONS 2009

	JANUARY INTERIM		MAY I	MAY II	SUMMER STUDY ABROAD	SUMMER I	SUMMER II	TOTAL (W/O STUDY ABROAD)
		STUDY ABROAD						
Freshmen	26	0	2	0	0	13	14	55
Sophomores	87	10	31	5	2	56	49	228
Juniors	208	57	131	9	39	149	162	659
Seniors	349	76	191	43	76	231	257	1071
Unclassified	5	0	10	1	0	37	22	75
UNDERGRADUATE	675	143	365	58	117	486	504	2088
Graduate Students	185	0	103	120	0	249	221	878
UNIVERSITY	860	143	468	178	117	735	725	2966
TOTAL CREDIT HRS	2423	531	1332	582	433	2462	2273	9072

**REGISTRATION REPORT**  
INTERIMS AND SUMMER SESSIONS 2008

	JANUARY INTERIM		MAY I	MAY II	SUMMER STUDY ABROAD	SUMMER I	SUMMER II	TOTAL (W/O STUDY ABROAD)
		STUDY ABROAD						
Freshmen	33	0	3	0	0	10	12	58
Sophomores	79	18	36	4	14	51	59	229
Juniors	192	72	117	11	46	134	176	630
Seniors	381	89	183	50	76	235	310	1159
Unclassified	0	0	7	0	0	30	12	49
UNDERGRADUATE	685	179	346	65	136	460	569	2125
Graduate Students	190	4	140	132	0	285	291	1038
UNIVERSITY	875	183	486	197	136	745	860	3163
TOTAL CREDIT HRS	2489	683	1380	661	526	2443	2628	9601

**SUMMER STUDY ABROAD ENROLLMENT**

BY CLASS

BY COLLEGE

	BY CLASS					BY COLLEGE					
	2009	2008	2007	2006	2005	2009	2008	2007	2006	2005	
CLASS 1	0	0	0	0	0	AEP	0	0	0	2	0
CLASS 2	2	14	4	8	1	FCB	31	34	38	39	2
CLASS 3	39	46	57	61	6	COE	0	0	0	0	0
CLASS 4	76	76	70	39	5	CFA	33	17	19	22	4
CLASS 7	0	0	0	0	0	EGT	4	6	11	6	0
UNDERGRAD	117	136	131	108	12	EHS	26	34	37	21	0
CLASS 5	0	0	0	0	0	LAS	23	45	26	18	6
CLASS 6	0	0	1	0	0	GRD	0	0	1	0	0
GRADUATE	0	0	1	0	0						
TOTAL	117	136	132	108	12	TOTAL	117	136	132	108	12

DAY STUDENTS BY CLASS Undergraduate Students					
Fall Term	Freshmen	Sophomores	Juniors	Seniors	Unclassified
1999	1169	1100	1240	1124	10
2000	1168	1162	1210	1239	12
2001	1184	1175	1271	1227	10
2002	1176	1124	1332	1223	11
2003	1169	1217	1394	1257	7
2004	1082	1200	1433	1360	11
2005	1208	1115	1351	1426	14
2006	1118	1193	1297	1427	12
2007	1114	1166	1313	1380	7
2008	1061	1147	1267	1361	6
2009	1134	1069	1289	1383	6

HEADCOUNT ENROLLMENT BY TERM OF ATTENDANCE (Fall and Spring Semesters)						
Year	Fall	January	Spring	May Int	Summer I	Summer II
1999-00	5837	749	5515	776	720	745
2000-01	5951	891	5646	705	710	861
2001-02	5996	699	5739	664	645	773
2002-03	6098	744	5768	680	650	777
2003-04	6137	739	5766	720	596	735
2004-05	6069	743	5783	739	674	781
2005-06	6154	779	5809	706	639	855
2006-07	6127	884	5844	739	806	816
2007-08	6055	875	5667	683	745	860
2008-09	5873	860	5520	646	735	725
2009-10	5801	0	0	0	0	0

## DATA HISTORY FOR THE GRAUATE SCHOOL

GRADUATE PROGRAM	HEADCOUNT MAJORS					DEGREES AWARDED (August, December, May****)				
	2005	2006	2007	2008	2009	2005	2006	2007	2008	2009
MA in Studio Art	2	1	0	1	1	0	1	1	0	0
Grd-Accounting	11	4	9	15	10	19	20	34	26	25
Grd-Business Administration	122	174	198	195	130	51	56	58	62	89
Grd-Biology	6	9	10	8	4	1	1	1	1	1
Grd-Civil Engineering	21	31	31	20	22	11	16	7	16	8
Grd-Chemistry	2	3	3	2	3	0	0	2	0	3
Grd-Computer Info System	5	5	3	3	3	1	4	4	0	4
Grd-Computer Science	60	63	64	29	51	34	33	31	24	38
Doctor of Physical Therapy	0	40	59	66	66	0	0	0	16	22
Grd-Electrical Engineering	49	33	54	45	36	9	39	29	14	32
Grd-Curriculum & Instruction	32	27	21	22	12	7	7	7	13	6
Grd-Leadership in Ed Admin	37	40	33	31	32	10	10	7	8	14
Grd-Counseling	73	69	70	72	63	21	24	22	18	30
Grd-English	17	16	18	18	22	8	7	5	8	9
Grd-Finance	0	0	0	0	1	0	0	0	0	0
Grd-Leadership in Human Serv	18	16	14	13	11	9	6	13	4	8
Grd-Industrial Engineering	21	21	15	19	17	8	6	12	8	8
Grd-Mechanical Engineering	55	77	76	61	76	13	28	27	44	27
MFA in Studio Art	9	10	11	12	10	3	2	1	3	2
Grd-Manufacturing Engineering	7	6	4	4	7	7	8	1	2	2
Master-Liberal Studies	13	12	10	4	4	8	5	6	3	3
PMA in STEM Education	0	0	0	21	34	0	0	0	0	0
Grd-Nursing	63	49	49	40	33	15	21	20	16	16
Grd-Physical Therapy	30	0	0	0	0	17	16	14	0	0
Grd-Student-At-Large**	128	98	71	68	65	0	0	0	0	0
Certificate Teaching**	0	0	10	21	19	0	0	0	0	0
Certificate School Counseling**	4	7	5	7	7	0	0	0	0	0
Certificate Nurse Anesthesia**	0	1	0	1	1	0	0	0	0	0
<b>TOTAL</b>	<b>653</b>	<b>706</b>	<b>752</b>	<b>701</b>	<b>648</b>	<b>252</b>	<b>310</b>	<b>302</b>	<b>286</b>	<b>347</b>

\* Prior to 2004, Art data was reported together  
 \*\* Not included in total.

\*\*\* i.e. August 06, December 06, May 07 reported under 2007

COMPARATIVE ENROLLMENT BY ACADEMIC UNIT

	2000		2001		2002		2003		2004		2005		2006		2007		2008		2009	
	FT	PT	FT	PT	FT	PT	FT	PT	FT	PT	FT	PT	FT	PT	FT	PT	FT	PT	FT	PT
Academic Exploration	453	19	367	17	326	15	341	13	374	14	335	8	284	5	308	9	305	9	311	5
College of Business	863	76	938	75	969	82	987	80	957	66	942	58	981	50	926	55	860	56	795	50
Continuing Education	0	17	0	13	1	12	0	10	1	11	1	15	1	14	0	8	0	9	0	7
Comm & Fine Arts	863	67	898	64	916	54	913	59	864	44	856	41	815	41	788	45	759	45	800	39
Engineering & Tech	740	66	740	67	703	60	727	49	725	40	754	38	741	38	757	44	729	43	766	30
Educ & Health Science	708	103	713	93	762	80	791	76	859	69	992	65	1031	70	989	56	964	67	1003	62
Liberal Arts & Sci.	1017	124	1070	103	1107	103	1168	91	1216	75	1175	89	1157	87	1152	80	1165	64	1126	67
Total Undergraduate	4644	472	4735	432	4784	406	4927	378	4996	319	5055	314	5010	305	4920	297	4782	293	4801	260
Graduate	183	652	188	641	254	654	224	608	215	539	208	577	232	580	315	523	258	540	304	436
University Total	4827	1124	4923	1073	5038	1060	5151	986	5211	858	5263	891	5242	885	5235	820	5040	833	5105	696

HISTORICAL ENROLLMENT BY GENDER

	2000		2001		2002		2003		2004		2005		2006		2007		2008		2009	
	M	F	M	F	M	F	M	F	M	F	M	F	M	F	M	F	M	F	M	F
FRESHMEN	558	621	563	627	516	665	540	636	471	615	522	692	499	630	508	611	498	572	500	635
SOPHOMORES	564	635	555	646	545	630	558	691	568	648	523	621	550	664	529	658	547	617	498	590
JUNIORS	558	740	610	753	664	763	682	789	663	836	648	780	620	737	635	737	608	719	638	697
SENIORS	686	737	629	771	687	767	654	751	709	793	690	877	709	891	697	834	684	821	676	820
UNCLASSIFIED	10	7	6	7	3	10	5	5	8	4	8	8	8	7	2	6	4	5	5	2
TOTAL UNDERGRADUATE	2376	2740	2363	2804	2355	2835	2433	2872	2419	2896	2391	2978	2386	2929	2371	2846	2341	2734	2317	2744
GRADUATE	516	319	477	352	493	415	456	376	335	327	315	339	389	325	408	359	369	361	343	332
STUDENT AT LARGE	0	0	0	0	0	0	0	0	52	40	70	58	48	50	33	38	31	37	29	36
TOTALGRADUATE	516	319	477	352	493	415	456	376	387	367	388	397	437	375	441	397	400	398	372	368
TOTAL BY GENDER	2892	3059	2840	3156	2848	3250	2889	3248	2806	3263	2779	3375	2823	3304	2812	3243	2741	3132	2689	3112
UNIVERSITY TOTAL	5951	0	5996	0	6098	0	6137	0	6069	0	6154	0	6127	0	6055	0	5873	0	5801	0

## 2009 FALL PLACE OF RESIDENCE OF ALL UNDERGRADUATES

TOTAL US	5029	99.4
ILLINOIS	4457	88.1
OUT OF STATE	572	11.3
U.S. POSSESSIONS	1	0.0
FOREIGN	31	0.6
TOTAL UNDERGRADUATES	5061	

CHICAGO METRO (Cook, Lake, Will, Kane, McHenry, Kendall, Du Page)	2220
PEORIA METRO (Peoria, Tazewell, Woodford)	1271
ST LOUIS METRO (St. Clair, Madison)	54

	<u>STATES</u>
ALABAMA	2
ALASKA	2
ARIZONA	6
ARKANSAS	1
CALIFORNIA	25
COLORADO	9
CONNECTICUT	4
FLORIDA	9
GEORGIA	2
HAWAII	3
ILLINOIS	4457
INDIANA	67
IOWA	45
KANSAS	5
KENTUCKY	9
LOUISIANA	1
MARYLAND	2
MASSACHUSETTS	3
MICHIGAN	7
MINNESOTA	40
MISSOURI	160
NEBRASKA	13
NEVADA	2
NEW HAMSHIRE	2
NEW JERSEY	6
NEW YORK	8
NORTH CAROLINA	2
OHIO	29
OKLAHOMA	3
PENNSYLVANIA	7
PUERTO RICO	1
SOUTH CAROLINA	1
SOUTH DAKOTA	1
TENNESSEE	6
TEXAS	23
VIRGINIA	3

WASHINGTON	3
WEST VIRGINIA	1
WISCONSIN	60

		<u>COUNTIES</u>	
Adams	10	Logan	10
Bond	1	Macon	28
Boone	19	Macoupin	5
Brown	2	Madison	35
Bureau	23	Marion	2
Carroll	6	Marshall	25
Cass	3	Mason	15
Champaign	21	Mcdonough	4
Christian	9	Mchenry	138
Coles	1	Mclean	72
Cook	957	Menard	4
Dekalb	15	Mercer	11
Dewitt	7	Monroe	6
Douglas	1	Montgomery	3
Dupage	423	Morgan	1
Effingham	2	Moultrie	1
Fayette	1	Ogle	29
Ford	5	Peoria	776
Franklin	1	Piatt	3
Fulton	30	Pike	1
Greene	1	Putnam	7
Grundy	18	Randolph	1
Hancock	2	Richland	2
Henry	45	Rock Island	56
Iroquois	10	Saline	1
Jersey	1	Sangamon	56
Jo Daviess	3	Shelby	1
Kane	160	St Clair	19
Kankakee	40	Stark	13
Kendall	21	Stephenson	9
Knox	54	Tazewell	414
Lake	258	Vermilion	9
Lasalle	65	Warren	4
Lawrence	1	Washington	1
Lee	10	Wayne	1
Livingston	14	Whiteside	17

Will	263
Winnebago	93
Woodford	81

HEADCOUNT ENROLLMENT BY RACE AND CLASS

Audit only students are not included.

	FALL 2009								FALL 2008							
	Frosh	Soph	Junior	Senior	Non-Deg	Grad	TOTAL	%	Frosh	Soph	Junior	Senior	Non-Deg	Grad	TOTAL	%
Black/African Am.	137	113	68	76	0	25	419	7.2	123	75	79	86	0	37	400	6.8
Native American	*	*	11	*	*	*	28	0.5	*	9	*	*	0	*	26	0.4
Asian	45	45	56	63	0	12	221	3.8	42	50	59	45	*	17	214	3.6
Hispanic	60	53	66	43	*	9	232	4.0	48	53	36	39	0	6	182	3.1
White	878	855	1108	1263	9	442	4555	78.5	832	956	1119	1282	8	494	4691	79.8
Non-Resident Alien	*	*	12	9	0	198	228	3.9	*	9	*	11	0	182	212	3.6
Did not indicate	6	13	14	33	*	50	117	2.0	15	11	25	36	*	59	148	2.5
Total	1135	1088	1335	1491	12	739	5800	100.0	1070	1163	1327	1504	11	798	5873	100.0

HEADCOUNT ENROLLMENT BY RACE AND GENDER

Audit only students are not included.

	FALL 2009								FALL 2008							
	**** UNDERGRADUATE ****			***** GRADUATE *****			University		**** UNDERGRADUATE ****			***** GRADUATE *****			University	
	Male	Female	Total	Male	Female	Total	Total	%	Male	Female	Total	Male	Female	Total	Total	%
Black/African Am.	120	274	394	9	16	25	419	7.2	118	245	363	13	24	37	400	6.8
Native American	11	14	25	*	*	*	28	0.5	8	15	23	*	*	*	26	0.4
Asian	95	114	209	*	9	12	221	3.8	99	98	197	8	9	17	214	3.6
Hispanic	87	136	223	*	6	9	232	4.0	59	117	176	*	*	6	182	3.1
White	1950	2163	4113	191	251	442	4555	78.5	1988	2209	4197	215	279	494	4691	79.8
Non-Resident Alien	16	14	30	136	62	198	228	3.9	20	10	30	122	60	182	212	3.6
Did not indicate	38	29	67	29	21	50	117	2.0	49	40	89	38	21	59	148	2.5
Total	2317	2744	5061	372	367	739	5800	100.0	2341	2734	5075	400	398	798	5873	100.0

HEADCOUNT ENROLLMENT BY AGE GROUP

Audit only students are not included.

	FALL 2009						FALL 2008							
	UNDERGRADUATE		GRADUATE		UNCLASSIFIED	TOTAL	%	UNDERGRADUATE		GRADUATE		UNCLASSIFIED	TOTAL	%
Full-time	Part-time	Full-time	Part-time	Full-time				Part-time	Full-time	Part-time	Full-time			
UNDER 18	22	0	0	0	0	22	0.4	23	0	0	0	0	23	0.4
18 - 19	1916	8	0	0	1	1925	33.1	1905	6	0	0	0	1911	32.5
20 - 21	2105	26	4	9	1	2145	36.9	2110	44	16	9	2	2181	37.1
22 - 24	658	71	178	97	1	1005	17.3	613	86	144	98	2	943	16.0
25 - 29	57	37	78	129	1	302	5.2	82	36	59	167	0	344	5.9
30 - 34	23	33	10	74	1	141	2.4	22	30	19	96	0	167	2.8
35 - 39	6	22	11	47	0	86	1.5	15	19	13	66	2	115	2.0
40 - 49	12	29	19	54	0	114	2.0	11	35	6	77	0	129	2.2
50 - 64	2	19	4	19	1	45	0.8	1	19	1	21	0	42	0.7
65 AND OVER	0	8	0	6	1	15	0.3	0	9	0	6	3	18	0.3
TOTAL	4801	253	304	435	7	5800	100.0	4782	284	258	540	9	5873	100.0
BY LEVEL		5054		739			0.0		5066		798			0.0



**COLLEGE HEADCOUNT ENROLLMENT BY RACE**  
Students Auditing only are not counted

FALL 2007

	UNIV TOTAL	FULL-TIME									PART-TIME								
		AEP	BUS	CFA	EGT	EHS	LAS	GRAD	CED	TOTAL	AEP	BUS	CFA	EGT	EHS	LAS	GRAD	CED	TOTAL
Black/African Am.	351	31	43	54	20	39	100	7	0	294	*	7	*	*	14	6	22	0	57
Native American	22	*	*	*	*	*	*	*	0	19	0	0	*	0	0	*	*	0	*
Asian	203	15	34	28	18	31	57	*	0	188	0	*	*	0	*	*	*	*	15
Hispanic	169	11	31	20	22	29	44	*	0	158	0	0	*	0	*	*	*	*	11
White	4880	242	787	669	666	867	914	148	0	4293	*	41	35	40	37	62	361	6	587
Non-Resident Alien	275	*	10	*	9	0	10	142	0	179	0	*	0	*	0	0	94	0	96
Did not indicate	153	*	19	12	19	18	22	10	0	104	0	*	*	*	*	*	36	0	49
<b>Total</b>	<b>6053</b>	<b>308</b>	<b>926</b>	<b>788</b>	<b>757</b>	<b>989</b>	<b>1152</b>	<b>315</b>	<b>0</b>	<b>5235</b>	<b>9</b>	<b>55</b>	<b>45</b>	<b>44</b>	<b>55</b>	<b>80</b>	<b>522</b>	<b>8</b>	<b>818</b>

FALL 2008

	UNIV TOTAL	FULL-TIME									PART-TIME								
		AEP	BUS	CFA	EGT	EHS	LAS	GRAD	CED	TOTAL	AEP	BUS	CFA	EGT	EHS	LAS	GRAD	CED	TOTAL
Black/African Am.	400	51	46	55	15	54	112	11	0	344	*	8	*	*	13	*	26	0	56
Native American	26	0	*	6	*	6	6	0	0	22	0	0	*	0	0	0	*	0	*
Asian	214	11	45	22	18	35	55	6	0	192	0	*	0	*	*	*	11	*	22
Hispanic	182	13	32	25	20	35	45	*	0	171	0	*	*	0	*	*	*	0	11
White	4691	225	714	636	648	820	926	133	0	4102	*	39	36	37	48	57	361	7	589
Non-Resident Alien	212	*	9	*	9	*	*	89	0	117	0	0	0	*	0	*	93	0	95
Did not indicate	148	*	12	12	17	13	17	18	0	92	*	*	*	*	*	*	41	*	56
<b>Total</b>	<b>5873</b>	<b>305</b>	<b>860</b>	<b>759</b>	<b>729</b>	<b>964</b>	<b>1165</b>	<b>258</b>	<b>0</b>	<b>5040</b>	<b>9</b>	<b>56</b>	<b>45</b>	<b>43</b>	<b>67</b>	<b>64</b>	<b>540</b>	<b>9</b>	<b>833</b>

FALL 2009

	UNIV TOTAL	FULL-TIME									PART-TIME								
		AEP	BUS	CFA	EGT	EHS	LAS	GRAD	CED	TOTAL	AEP	BUS	CFA	EGT	EHS	LAS	GRAD	CED	TOTAL
Black/African Am.	419	60	56	67	18	58	110	8	0	377	*	*	*	*	11	*	17	0	42
Native American	28	0	*	6	*	*	7	*	0	24	0	0	0	0	*	0	*	*	*
Asian	221	8	47	23	23	39	65	*	0	210	0	*	0	0	*	0	7	0	11
Hispanic	232	21	31	39	24	38	57	*	0	212	0	*	*	*	*	*	7	0	20
White	4555	215	645	653	672	852	870	155	0	4062	*	40	30	25	44	58	287	6	493
Non-Resident Alien	228	*	6	*	9	*	*	115	0	143	0	0	*	*	0	0	83	0	85
Did not indicate	117	*	7	9	16	11	13	18	0	77	*	*	*	0	*	*	32	0	40
<b>Total</b>	<b>5800</b>	<b>311</b>	<b>795</b>	<b>800</b>	<b>766</b>	<b>1003</b>	<b>1126</b>	<b>304</b>	<b>0</b>	<b>5105</b>	<b>*</b>	<b>50</b>	<b>39</b>	<b>30</b>	<b>62</b>	<b>67</b>	<b>435</b>	<b>7</b>	<b>695</b>

FRESHMAN PROFILE

HIGH SCHOOL RANK	2000		2001		2002		2003		2004		2005		2006		2007		2008		2009	
	#	%	#	%	#	%	#	%	#	%	#	%	#	%	#	%	#	%	#	%
UPPER 1/10	285	29	325	31	309	31	293	30	279	31	265	27	382	41	245	26	229	26	223	25
2/10	224	22	240	19	266	26	204	21	170	19	200	20	203	21	238	26	218	25	216	24
3/10	167	17	163	15	187	18	152	16	138	15	172	17	141	15	168	18	165	18	161	18
4/10	121	12	108	11	116	11	106	11	118	13	106	11	100	10	108	11	123	14	118	13
5/10	74	7	66	8	60	6	71	7	79	9	78	8	49	5	84	9	58	6	73	8
6/10	52	5	56	8	40	4	51	5	46	5	61	6	39	4	42	4	48	5	42	4
7/10	43	4	40	5	22	2	26	3	26	3	47	5	12	1	18	1	21	2	27	3
8/10	27	3	17	6	8	1	40	4	19	2	37	4	2		4	7			11	1
9/10	7	1	9	1	4		27	3	33	4	31	4			3					
10/10															1					
NO RANKING	83		79		92		133		102		135		146		169		162		235	
TOTAL RANKED	1000		1024		1012		970		908		997		928		911		869		871	

ENTRANCE TEST SCORES

	2000	2001	2002	2003	2004	2005	2006	2007	2008	2009
S.A.T VERBAL	590	590	600	550	588	571	565	561	563	558
S.A.T MATH	610	600	620	560	602	585	584	574	578	580
A.C.T COMPOSITE	25.1	25.5	25.5	25.1	25.0	24.0	25.2	25.1	25.1	24.9

## 2009 FALL PLACE OF RESIDENCE OF ALL FIRST TIME ENTRANTS

TOTAL US	1102	99.6	CHICAGO METRO (Cook, Lake, Will, Kane, McHenry, Kendall, Du Page)			
ILLINOIS	955	86.4	596			
OUT OF STATE	147	13.3	PEORIA METRO (Peoria, Tazewell, Woodford)			
U.S. POSSESSIONS	0	0.0	132			
FOREIGN	4	0.4	ST LOUIS METRO (St. Clair, Madison)			
TOTAL UNDERGRADUATES	1106		15			
	<b><u>STATES</u></b>			<b><u>COUNTIES</u></b>		
ALASKA	1		Adams	2	Mcdonough	1
CALIFORNIA	4		Boone	6	Mchenry	29
COLORADO	1		Brown	1	Mclean	17
CONNECTICUT	1		Bureau	5	Menard	1
FLORIDA	2		Carroll	1	Mercer	3
GEORGIA	1		Cass	1	Monroe	1
HAWAII	1		Champaign	5	Montgomery	1
ILLINOIS	955		Christian	1	Ogle	8
INDIANA	14		Cook	270	Peoria	72
IOWA	13		Dekalb	3	Putnam	1
KANSAS	2		Dewitt	1	Rock Island	18
KENTUCKY	1		Douglas	1	Sangamon	12
MICHIGAN	3		Dupage	96	St Clair	7
MINNESOTA	12		Ford	2	Stark	2
MISSOURI	41		Franklin	1	Stephenson	1
NEBRASKA	2		Fulton	2	Tazewell	47
NEVADA	1		Grundy	4	Vermilion	1
NEW HAMSHIRE	1		Henry	9	Warren	1
NEW JERSEY	1		Iroquois	2	Washington	1
NEW YORK	3		Jo Daviess	1	Whiteside	2
OHIO	6		Kane	52	Will	74
PENNSYLVANIA	2		Kankakee	9	Winnebago	25
SOUTH DAKOTA	1		Kendall	6	Woodford	13
TEXAS	4		Knox	16		
VIRGINIA	2		Lake	69		
WISCONSIN	27		Lasalle	15		
			Lawrence	1		
			Lee	5		
			Livingston	2		
			Logan	3		
			Macon	7		
			Macoupin	2		
			Madison	8		
			Marion	1		
			Marshall	3		
			Mason	4		

STUDY OF PERSISTENCE AND WITHDRAWAL  
 FIVE YEARS AFTER ENTRANCE  
 FOR FULL-TIME FRESHMEN ENTERING FALL 2002

	No.	% of Total
Graduated with a Bachelors Degree	843	75.9%
Still Attending After August 2007	37	3.3%
Withdrew	197	17.7%
Scholastic Dismissal	33	3.0%
Disciplinary Dismissal	0	0.0%
Deceased	1	0.1%
Unknown	0	
<b>TOTAL</b>	<b>1111</b>	<b>99.9%</b>

NUMBER OF TIMES	0	1	2	3	4	5	6	7	8	9	10	Total
Number of Changes of Curriculum	647	398	54	11	1	0	0	0	0	0	0	1111
Number of Transfer Sources	259	484	298	58	12	0	0	0	0	0	0	1111
Number of Bradley Summer Sessions	268	186	204	184	127	75	41	16	6	2	2	1111
Number of Bradley Regular Semesters Attended	0	37	73	40	33	13	14	37	586	144	134	1111
Number of Dismissals	1071	36	4	0	0	0	0	0	0	0	0	1111

GRADUATION RATES

Freshmen Entering Year	1993	1994	1995	1996	1997	1998	1999	2000	2001	2002	Average
Four Year Rate	46.7	48.8	45.9	45.7	49.4	61.9	62.6	52.4	53.5	54.3	52.1
Five Year Rate	65.7	66.4	63.6	68.5	69.1	71.2	70.6	71.1	73.6	75.9	69.6
Six Year Rate	67.2	67.3	66.2	70.2	71.3	71.9	72.7	72.6	75.9	78.2	71.4

## SUMMARY OF CLASS CHANGES (Adds/Drops)

	FALL 2008					SPRING 2009					FALL 2007					SPRING 2008				
	1	2	3	4	TOTAL	1	2	3	4	TOTAL	1	2	3	4	TOTAL	1	2	3	4	TOTAL
CHANGES*	548	471	532	570	2121	336	383	472	644	1835	514	527	587	679	2307	354	447	497	653	1951
ADDING*	42	78	82	104	306	32	48	90	137	307	43	78	122	150	393	33	56	88	142	319
DROPPING*	323	223	256	248	1050	198	183	221	208	810	299	259	258	255	1071	216	239	219	266	940
ADDING/DROPPING*	183	170	194	218	765	106	152	161	299	718	172	190	207	274	843	105	152	190	245	692
TOTAL ADDS	8483	9056	9557	9676	36772	6474	7513	8757	10262	33006	8782	9279	9972	9808	37841	6331	7816	9352	10285	33784
TOTAL DROPS	1773	2844	2662	2424	9703	1975	2043	2171	2374	8563	1765	2994	2995	2367	10121	1726	2254	2496	2505	8981
SECTION EXCHANGE*	75	68	94	77	314	63	49	86	123	321	85	90	88	70	333	53	75	76	114	318
ADD LTR DROP	349	369	316	419	1453	292	301	247	444	1284	305	336	353	374	1368	237	302	303	480	1322
STUDENTS DROP/NON-PAY	8	20	22	45	95	21	25	23	31	100	14	22	37	61	134	8	24	37	43	112
CLASSES DROP/NON-PAY	39	161	105	141	446	100	134	90	136	460	78	112	214	174	578	12	173	201	138	524

NOTE: CLASS in all cases is before grades are calculated for the semester.  
 Unclassified undergraduates and graduate students are not included.  
 \* = After the beginning of classes

## SCHEDULE OF REVISIONS AFTER EARLY REGISTRATION

	FALL 2008		SPRING 2009		FALL 2007		SPRING 2008	
	ADDS	DROPS	ADDS	DROPS	ADDS	DROPS	ADDS	DROPS
WEEK 1	1393	1163	1441	1040	1674	1262	1337	921
WEEK 2	112	212	67	155	110	229	149	230
WEEK 3	90	75	26	56	84	99	38	85
WEEK 4	19	85	53	75	21	98	34	94
WEEK 5	27	112	20	71	24	104	17	77
WEEK 6	31	103	23	93	19	84	16	88
WEEK 7	6	63	16	69	20	141	21	89
WEEK 8	10	148	8	12	14	171	3	23
WEEK 9	10	169	7	140	14	192	14	136
WEEK 10	14	182	15	124	14	202	17	139
WEEK 11	7	183	7	124	5	235	7	178
WEEK 12	4	395	2	147	2	310	4	219
WEEK 13	1	6	5	321	2	18	5	334
WEEK 14	0	9	2	11	0	5	1	8
WEEK 15+	4	20	4	15	0	14	10	24
CANCEL NON/PAY	0	446	0	460	0	578	0	524
EARLY REGISTRAION	35044	6332	31311	5650	35838	6379	32111	5812

## GRADEPOINT PROFILE

Average of Grades Issued to **Full-Time** Undergraduates

Year	Semester	Full-Time Undergraduate Students				
		Freshmen	Sophomores	Juniors	Seniors	All
1996-97	FALL	2.75	2.96	2.98	3.13	2.99
	SPRING	2.84	2.99	3.00	3.17	3.02
1997-98	FALL	2.77	2.86	3.00	3.17	2.96
	SPRING	2.89	2.91	3.07	3.22	3.04
1998-99	FALL	2.82	2.92	2.98	3.18	2.98
	SPRING	2.86	3.03	3.02	3.18	3.03
1999-00	FALL	2.83	2.95	3.08	3.20	3.02
	SPRING	2.93	3.04	3.08	3.15	3.06
2000-01	FALL	2.85	2.96	3.06	3.18	3.01
	SPRING	3.00	3.05	3.11	3.22	3.11
2001-02	FALL	2.85	2.97	3.04	3.18	3.03
	SPRING	2.99	3.05	3.10	3.23	3.10
2002-03	FALL	2.93	3.04	3.07	3.24	3.07
	SPRING	3.00	3.09	3.09	3.23	3.11
2003-04	FALL	2.81	2.94	3.08	3.18	3.03
	SPRING	2.93	3.07	3.14	3.25	3.11
2004-05	FALL	2.85	2.95	3.09	3.24	3.07
	SPRING	2.97	3.07	3.16	3.27	3.14
2005-06	FALL	2.93	3.02	3.12	3.29	3.10
	SPRING	2.96	3.10	3.14	3.28	3.14
2006-07	FALL	3.00	3.01	3.09	3.26	3.10
	SPRING	2.99	3.11	3.14	3.27	3.15
2007-08	FALL	2.96	3.06	3.10	3.26	3.10
	SPRING	2.94	3.12	3.16	3.28	3.14
2008-09	FALL	2.92	3.00	3.17	3.29	3.11
	SPRING	2.94	3.13	3.19	3.32	3.17

ACADEMIC DISMISSALS

Year Semester	Undergraduate Students										Graduate %**	University Total		
	Full-Time %* Total		Full-Time %** Freshmen		Full-Time %** Sophomores		Full-Time %** Juniors		Full-Time %** Seniors				Part-Time	
2000-01 FALL	35	0.8	11	0.9	15	1.3	8	0.7	1	0.1	2	3	0.4	40
2000-01 SPRING	55	1.3	24	2.6	16	1.6	10	0.9	5	0.4	9	3	0.4	67
2001-02 FALL	22	0.5	5	0.4	6	0.5	5	0.4	6	0.5	2	3	0.4	27
2001-02 SPRING	58	1.3	33	3.5	12	1.2	10	0.8	3	0.2	4	4	0.5	66
2002-03 FALL	24	0.5	6	0.5	11	1.0	5	0.4	2	0.2	9	3	0.6	36
2002-03 SPRING	46	1.0	27	2.9	10	1.0	6	0.5	3	0.2	4	2	0.2	52
2003-04 FALL	25	0.5	0	0.0	16	1.3	7	0.5	2	0.2	3	3	0.4	31
2003-04 SPRING	55	1.2	36	3.8	7	0.7	10	0.8	2	0.2	4	0	0.0	59
2004-05 FALL	30	0.6	6	0.7	13	1.2	8	0.6	3	0.2	6	5	0.7	41
2004-05 SPRING	38	0.8	23	2.8	8	0.8	4	0.3	3	0.2	4	4	0.5	46
2005-06 FALL	20	0.4	9	0.8	7	0.6	1	0.1	3	0.2	5	2	0.3	27
2005-06 SPRING	39	0.8	19	2.0	6	0.6	12	0.9	2	0.1	5	3	0.4	47
2006-07 FALL	14	0.3	2	0.2	7	0.6	4	0.3	1	0.1	2	2	0.2	18
2006-07 SPRING	51	1.1	26	3.0	18	1.7	5	0.4	2	0.1	4	13	1.5	68
2007-08 FALL	23	0.5	5	0.5	9	0.8	7	0.5	2	0.2	4	11	1.3	38
2007-08 SPRING	46	1.0	23	2.7	10	1.0	9	0.7	4	0.3	4	8	1.0	58
2008-09 FALL	14	0.3	5	0.5	5	0.5	1	0.1	3	0.2	4	4	0.5	22
2008-09 SPRING	52	1.2	36	4.4	6	0.6	8	0.7	2	0.1	5	10	1.3	67

SCHOLASTIC PROBATION Undergraduates						
			Graduate	University		
		Full-Time	Part-Time	Total		
2002-03	Fall	134	13	147	28	175
	Spring	70	14	84	20	104
	Total	204	27	231	48	279
2003-04	Fall	186	19	205	10	215
	Spring	92	7	99	7	106
	Total	278	26	304	17	321
2004-05	Fall	168	12	180	11	191
	Spring	92	7	99	7	106
	Total	260	19	279	18	297
2005-06	Fall	167	9	176	17	193
	Spring	79	4	83	23	106
	Total	246	13	259	40	299
2006-07	Fall	157	13	170	42	212
	Spring	84	10	94	65	159
	Total	241	23	264	107	371
2007-08	Fall	149	7	156	37	193
	Spring	73	6	79	20	99
	Total	222	13	235	57	292
2008-09	Fall	154	8	162	24	186
	Spring	66	10	76	10	86
	Total	220	18	238	34	272

DEGREES				
		Undergrad	Grad	Total
2002-03	August	91	69	160
	Fall	243	49	292
	Spring	791	138	929
	Total	1125	256	1381
2003-04	August	101	68	169
	Fall	233	67	300
	Spring	805	142	947
	Total	1139	277	1416
2004-05	August	98	53	151
	Fall	236	67	303
	Spring	839	132	971
	Total	1173	252	1425
2005-06	August	126	60	186
	Fall	245	102	347
	Spring	848	148	996
	Total	1219	310	1529
2006-07	August	115	69	184
	Fall	271	63	334
	Spring	903	170	1073
	Total	1289	302	1591
2007-08	August	89	56	145
	Fall	268	91	359
	Spring	829	139	968
	Total	1186	286	1472
2008-09	August	97	74	171
	Fall	226	122	348
	Spring	846	149	995
	Total	1169	345	1514





**Freshman to Sophomore Retention: Ten Year Overview**

	Cohort Year									
	1999	2000	2001	2002	2003	2004	2005	2006	2007	2008
<b>Enrollment</b>	1073	1082	1100	1111	1104	1012	1132	1074	1080	1031
<b>Avg ACT</b>	24	24.9	25	25.1	25.1	25.2	25	25	25	25.1
<b>Avg SAT</b>	1149	1193	1184	1209	1147	1183	1157	1147	1135	1141
<b>Retention</b>	937 87.33%	934 86.32%	943 85.73%	985 88.66%	985 89.22%	885 87.45%	990 87.46%	956 89.01%	951 88.06%	896 86.91%
<b>Voluntary Withdrawal</b>	113 10.53%	128 11.83%	131 11.91%	107 9.63%	97 8.79%	111 10.97%	127 11.22%	99* 9.22%	111 10.28%	104* 10.09%
<b>Academic Dismissal</b>	23 2.14%	20 1.85%	26 2.36%	19 1.71%	22 1.99%	16 1.58%	15 1.32%	19 1.77%	18 1.66%	31 3.01%
<b>Males</b>	473	508	503	479	500	420	484	466	482	471
<b>Females</b>	600	574	597	632	604	592	648	608	598	560
<b>Race</b>										
<b>Am Indian</b>	2	3	4	2	2	2	2	3	6	5
<b>Afr Amer</b>	43	54	41	61	73	58	75	68	73	116
<b>Asian</b>	19	23	27	37	40	32	37	45	49	44
<b>Hispanic</b>	16	13	17	31	31	20	40	29	46	48
<b>Caucasian</b>	937	935	944	889	923	872	958	910	895	800
<b>Other</b>	56	54	67	91	35	28	20	19	11	18
<b>College</b>										
<b>AEP</b>	260	246	227	213	232	220	222	176	211	196
<b>BUS</b>	140	150	146	153	135	124	145	184	132	120
<b>CFA</b>	186	194	193	181	184	158	153	161	150	143
<b>EGT</b>	159	167	198	168	178	144	192	158	179	175
<b>EHS</b>	140	118	127	145	143	136	206	210	194	167
<b>LAS</b>	188	207	209	251	232	230	214	185	214	230

\*Includes one deceased student.